

# Brick 1x1 - #1248



2W



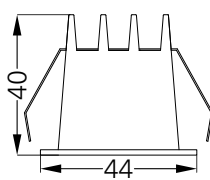
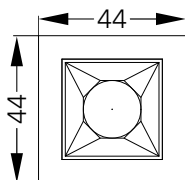
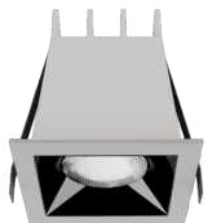
195lm



4000K



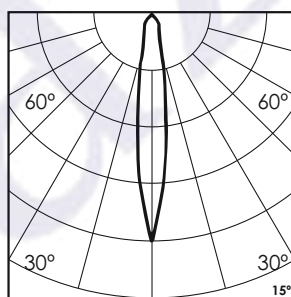
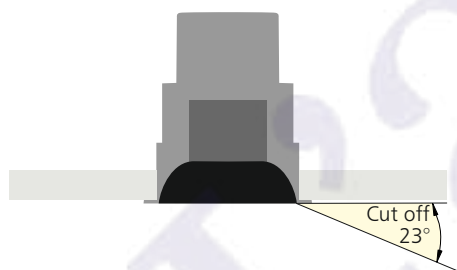
15°



37x37

## Photometric Data

Light source	LED - High Power	Light output ratio	68%
Power (W)	2W	Color rendering index (Ra)	>92
Delivered lumens	195lm	Color rendering index (R9)	>50
Source lumens	285lm	Binning MacAdam	<3 SDCM
Colour temperature (K)	4000K	LED life	L90 B10 Tj75°C
Luminaire efficacy	97.5lm/W	UGR	<19
Beam angle	15°	Operating temperature	-20°C to +50°C
Cutoff angle	23°	Light distribution	Direct - Symmetric



## Technical Data

Mounting detail	Ceiling - Recessed 1-25mm	Product weight	62gms
Fixing detail	Dual tension spring	Safety class	III
Orientation	Fixed	Insulation class	III
IP rating	IP20	LED current (mA)	500mA
Glow wire test	850°	Voltage	AC230V
Trim material	Diecast alm.	Forward voltage	DC3V
Heatsink material	Diecast alm.	Driver	CC - Remote

## Photometric Graphs

Hue Bin vs Rf Graph



Color Vector Graph



Spectrum vs Wavelength Graph



CIE Chromaticity Graph



## Finish Options

### Trim Finish

- ☐ Matt White
- ☒ Matt Black
- ☐ Custom RAL Color

### Reflector Finish

- ☒ Specular
- ☐ Pearl Black

## Dimming Options



Constant Current Driver  
2w 500mA 220-240V  
Non Dimmable



Constant Current Driver  
2w 500mA 220-240V  
Triac Dimmable



Constant Current Driver  
2w 500mA 220-240V  
Analog 0-10V / 1-10V Dimmable



Constant Current Driver  
2w 500mA 220-240V  
Dali Dimmable



Constant Current Driver  
2w 500mA 220-240V  
Dali Tunable



Constant Current Driver  
2w 500mA 220-240V  
RF Tunable (operated with RF remote)