

Brick - Surface 1x3 - #1262



6W



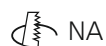
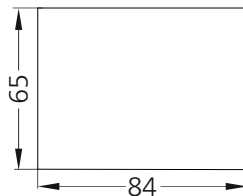
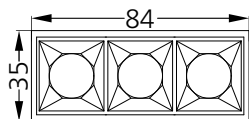
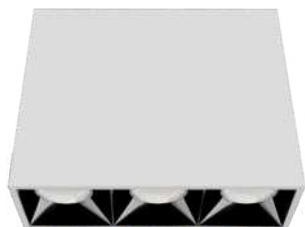
565lm



3000K

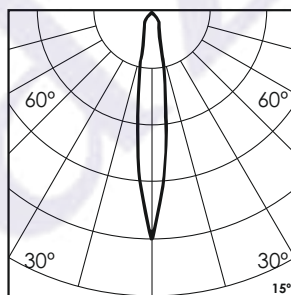
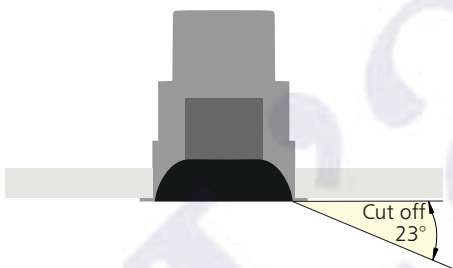


15°



Photometric Data

Light source	LED - High Power	Light output ratio	68%
Power (W)	6W	Color rendering index (Ra)	>92
Delivered lumens	565lm	Color rendering index (R9)	>50
Source lumens	825lm	Binning MacAdam	<3 SDCM
Colour temperature (K)	3000K	LED life	L90 B10 Tj75°C
Luminaire efficacy	94.16lm/W	UGR	<19
Beam angle	15°	Operating temperature	-20°C to +50°C
Cutoff angle	23°	Light distribution	Direct - Symmetric

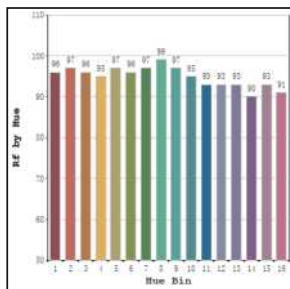


Technical Data

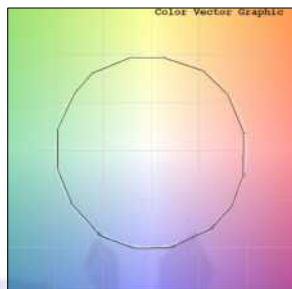
Mounting detail	Ceiling - Surface	Product weight	213gms
Fixing detail	Mounting with Screw	Safety class	III
Orientation	Fixed	Insulation class	III
IP rating	IP20	LED current (mA)	500mA
Glow wire test	850°	Voltage	AC230V
Trim material	NA	Forward voltage	DC9V
Heatsink material	Diecast alm.	Driver	In-built

Photometric Graphs

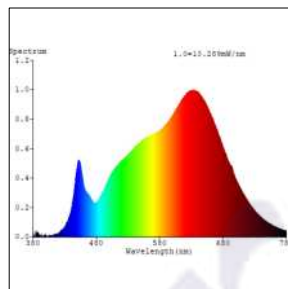
Hue Bin vs Rf Graph



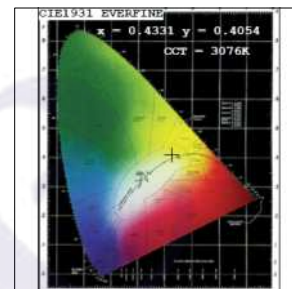
Color Vector Graph



Spectrum vs Wavelength Graph



CIE Chromaticity Graph



Finish Options

Body Finish

- ☐ Matt White
- ☐ Matt Black
- ☐ Custom RAL Color

Reflector Finish

- ☐ Specular
- ☐ Pearl Black

Dimming Options



Constant Current Driver
6w 500mA 220-240V
Non Dimmable



Constant Current Driver
6w 500mA 220-240V
Triac Dimmable



Constant Current Driver
6w 500mA 220-240V
Analog 0-10V / 1-10V Dimmable



Constant Current Driver
6w 500mA 220-240V
Dali Dimmable



Constant Current Driver
6w 500mA 220-240V
Dali Tunable



Constant Current Driver
6w 500mA 220-240V
RF Tunable (operated with RF remote)

In-built Driver placement is only possible for the Non Dimmable Driver option.

L'azure constantly strives to improve our products using the latest technological advancements in the industry.
Due to which the data mentioned in the data sheet is subject to change without prior notice.