

# Circle - Trimless 1x3 - #1264



6W



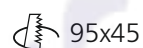
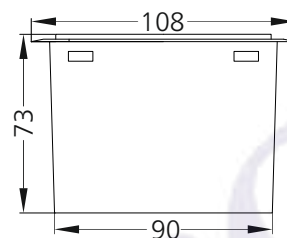
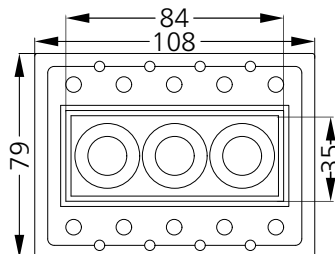
580lm



4000K



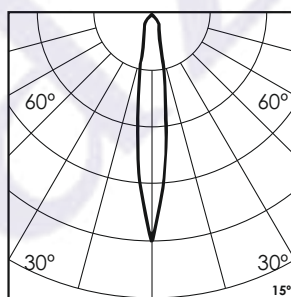
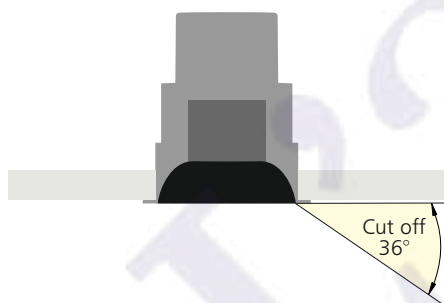
15°



## Photometric Data

Light source	LED - High Power
Power (W)	6W
Delivered lumens	580lm
Source lumens	855lm
Colour temperature (K)	4000K
Luminaire efficacy	96.66lm/W
Beam angle	15°
Cutoff angle	36°

Light output ratio	67%
Color rendering index (Ra)	>92
Color rendering index (R9)	>50
Binning MacAdam	<3 SDCM
LED life	L90 B10 Tj75°C
UGR	<19
Operating temperature	-20°C to +50°C
Light distribution	Direct - Symmetric



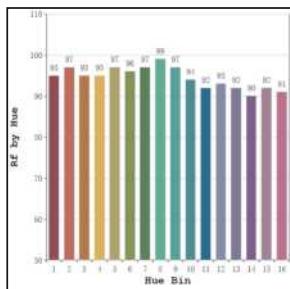
## Technical Data

Mounting detail	Ceiling - Recessed 1-25mm
Fixing detail	Mounting with Screw
Orientation	Fixed
IP rating	IP20
Glow wire test	850°
Trim material	NA
Heatsink material	Diecast alm.

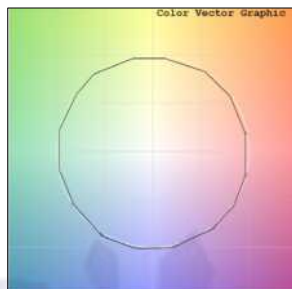
Product weight	249gms
Safety class	III
Insulation class	III
LED current (mA)	500mA
Voltage	AC230V
Forward voltage	DC9V
Driver	CC - Remote

## Photometric Graphs

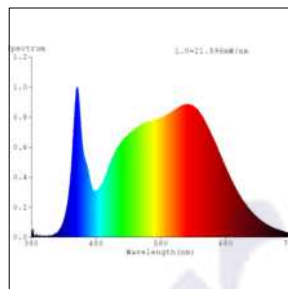
Hue Bin vs Rf Graph



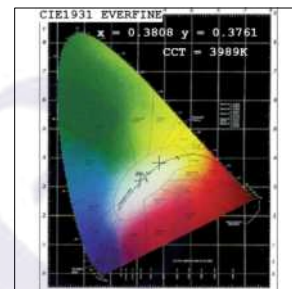
Color Vector Graph



Spectrum vs Wavelength Graph



CIE Chromaticity Graph



## Finish Options

### Body Finish

- ☐ Matt White
- ☒ Matt Black
- ☐ Custom RAL Color

### Reflector Finish

- ☐ Matt White
- ☒ Matt Black
- ☐ Specular
- ☐ Pearl Black
- ☐ Matt Gold

## Dimming Options



Constant Current Driver  
6w 500mA 220-240V  
Non Dimmable



Constant Current Driver  
6w 500mA 220-240V  
Triac Dimmable



Constant Current Driver  
6w 500mA 220-240V  
Analog 0-10V / 1-10V Dimmable



Constant Current Driver  
6w 500mA 220-240V  
Dali Dimmable



Constant Current Driver  
6w 500mA 220-240V  
Dali Tunable



Constant Current Driver  
6w 500mA 220-240V  
RF Tunable (operated with RF remote)