

# Top Bend L-IP65 - #2187



20W/M



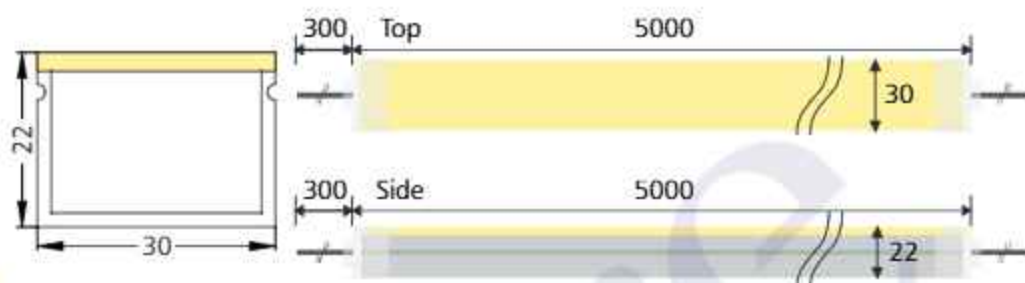
1030lm/m + 1370lm/m



RGB+W (2700K)



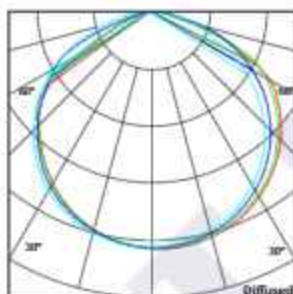
Diffused



RGB + W LED with On-board DMX Decoder Max Length 5000MM

## Photometric Data

Light source	LED - Low Power	Light output ratio	64%
Power (W)	20W/M	Color rendering index (Ra)	> 92
Delivered lumens	1030lm/m + 1370lm/m	Color rendering index (R9)	> 50
Source lumens	1600lm/m + 2220lm/m	Binning MacAdam	< 3 SDCM
Colour temperature (K)	RGB + W (2700K)	LED life	L90 B10 Tj75°C
Luminaire efficacy	51lm/W + 68lm/W	Operating temperature	-20°C to + 50°C
Beam angle	Diffused	Light distribution	Direct - Diffused

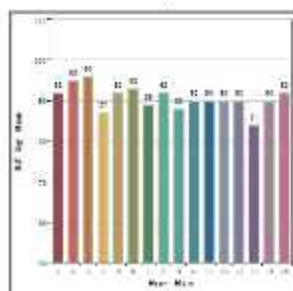


## Technical Data

Mounting detail	Profile or Clamp Mounted	Safety class	III
Fixing detail	Screw Mounting	Insulation class	III
Orientation	Fixed	Driver Input Voltage	AC230V
IP rating	IP65	Flexum voltage	DC24V
Glow wire test	850°	Driver	CV - Remote

## Photometric Graphs

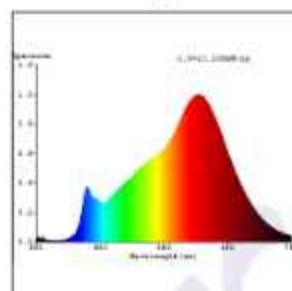
Hue Bin vs Rf Graph



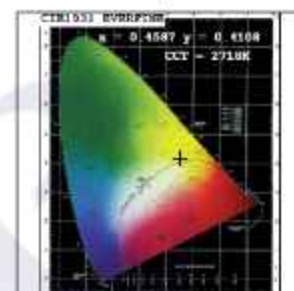
Color Vector Graph



Spectrum vs Wavelength Graph



CIE Chromaticity Graph



## Accessories Options



Top Bend  
Radius 500mm



Front  
Cable Entry



Mounting  
Clamp



Mounting  
Profile

## Dimming Options



Constant Voltage Driver  
DC24V

L'azure constantly strives to improve our products using the latest technological advancements in the industry.  
Due to which the data mentioned in the data sheet is subject to change without prior notice.