

# Hyeya Flat M - #1338



12W



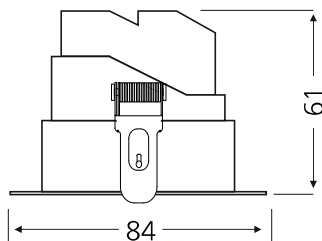
885lm



4000K

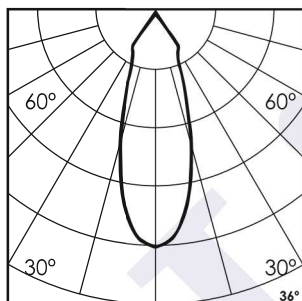


36°



## Photometric Data

Light source	LED - Array	Light output ratio	58%
Power (W)	12W	Color rendering index (Ra)	>95
Delivered lumens	885lm	Color rendering index (R9)	>85
Source lumens	1353lm	Binning MacAdam	<2 SDCM
Colour temperature (K)	4000K	LED life	L90 B10 Tj75°C
Luminaire efficacy	73.75lm/W	UGR	<19
Beam angle	36°	Operating temperature	-20°C to +50°C
Cutoff angle	NA	Light distribution	Direct - Symmetric

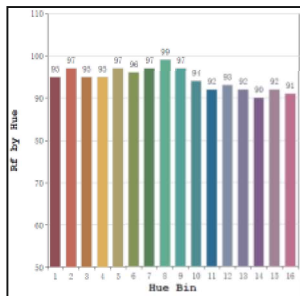


## Technical Data

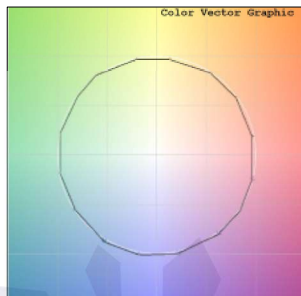
Mounting detail	Ceiling - Surface	Product weight	494gms
Fixing detail	Mounting with Screw	Safety class	III
Orientation	Fixed	Insulation class	III
IP rating	IP44	LED current (mA)	350mA
Glow wire test	850°	Voltage	AC230V
Trim material	NA	Forward voltage	DC36V
Heatsink material	Diecast alm.	Driver	Remote

## Photometric Graphs

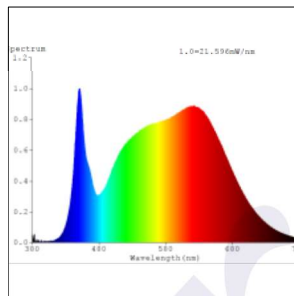
Hue Bin vs Rf Graph



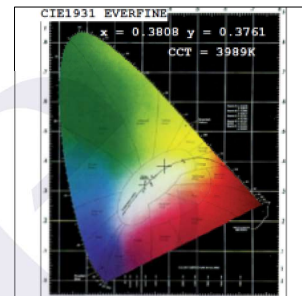
Color Vector Graph



Spectrum vs Wavelength Graph



CIE Chromaticity Graph



## Finish Options

### Body Finish

- ☐ Matt White
- ☒ Matt Black
- ☐ Custom RAL Color

### Reflector Finish

- ☐ Matt White
- ☒ Matt Black
- ☐ Specular
- ☐ Pearl Black
- ☐ Matt Silver
- ☐ Matt Gold

## Dimming Options



Constant Current Driver  
12w 350mA 220-240V  
Non Dimmable



Constant Current Driver  
12w 350mA 220-240V  
Triac Dimmable



Constant Current Driver  
12w 350mA 220-240V  
Analog 0-10V / 1-10V Dimmable



Constant Current Driver  
12w 350mA 220-240V  
Dali Dimmable

L'azure constantly strives to improve our products using the latest technological advancements in the industry.  
Due to which the data mentioned in the data sheet is subject to change without prior notice.