

Hyeya Flat XL - #1340



22W



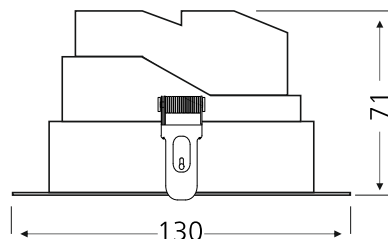
1575lm



2700K

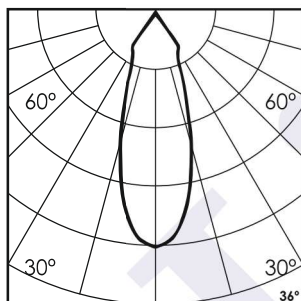


36°



Photometric Data

| | | | |
|------------------------|-------------|----------------------------|--------------------|
| Light source | LED - Array | Light output ratio | 64% |
| Power (W) | 22W | Color rendering index (Ra) | >95 |
| Delivered lumens | 1575lm | Color rendering index (R9) | >85 |
| Source lumens | 2458lm | Binning MacAdam | <2 SDCM |
| Colour temperature (K) | 2700K | LED life | L90 B10 Tj75°C |
| Luminaire efficacy | 71.59lm/W | UGR | <19 |
| Beam angle | 36° | Operating temperature | -20°C to +50°C |
| Cutoff angle | NA | Light distribution | Direct - Symmetric |

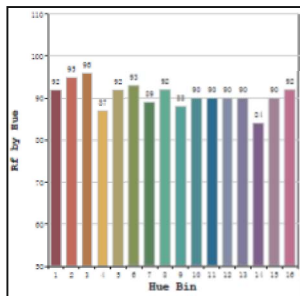


Technical Data

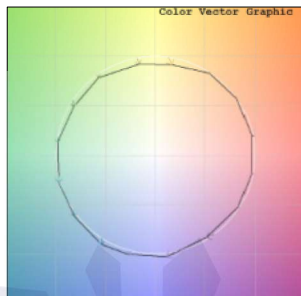
| | | | |
|-------------------|---------------------|------------------|---------|
| Mounting detail | Ceiling - Recessed | Product weight | 1404gms |
| Fixing detail | Dual tension spring | Safety class | III |
| Orientation | Fixed | Insulation class | III |
| IP rating | IP44 | LED current (mA) | 750mA |
| Glow wire test | 850° | Voltage | AC230V |
| Trim material | Diecast alm. | Forward voltage | DC36V |
| Heatsink material | Diecast alm. | Driver | Remote |

Photometric Graphs

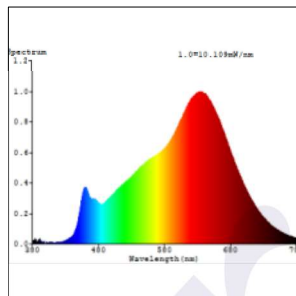
Hue Bin vs Rf Graph



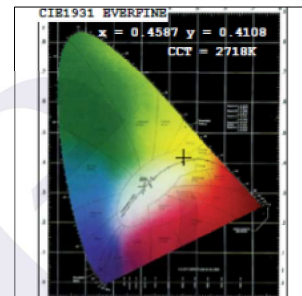
Color Vector Graph



Spectrum vs Wavelength Graph



CIE Chromaticity Graph



Finish Options

Body Finish

- ☐ Matt White
- ☒ Matt Black
- ☐ Custom RAL Color

Reflector Finish

- ☐ Matt White
- ☒ Matt Black
- ☐ Specular
- ☐ Pearl Black
- ☐ Matt Silver
- ☐ Matt Gold

Dimming Options



Constant Current Driver
22w 750mA 220-240V
Non Dimmable



Constant Current Driver
22w 750mA 220-240V
Triac Dimmable



Constant Current Driver
22w 750mA 220-240V
Analog 0-10V / 1-10V Dimmable



Constant Current Driver
22w 750mA 220-240V
Dali Dimmable

L'azure constantly strives to improve our products using the latest technological advancements in the industry.
Due to which the data mentioned in the data sheet is subject to change without prior notice.