

Hyeya Flat XL - #1340



22W



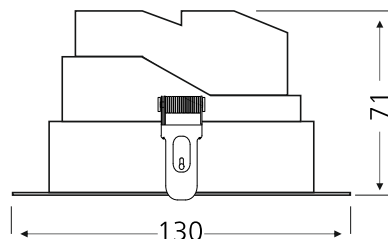
1615lm



3000K

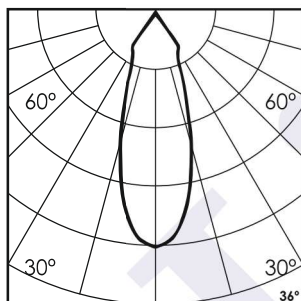


36°



Photometric Data

Light source	LED - Array	Light output ratio	64%
Power (W)	22W	Color rendering index (Ra)	>95
Delivered lumens	1615lm	Color rendering index (R9)	>85
Source lumens	2525lm	Binning MacAdam	<2 SDCM
Colour temperature (K)	3000K	LED life	L90 B10 Tj75°C
Luminaire efficacy	73.40lm/W	UGR	<19
Beam angle	36°	Operating temperature	-20°C to +50°C
Cutoff angle	NA	Light distribution	Direct - Symmetric

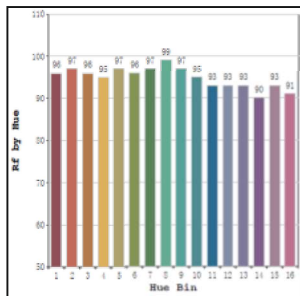


Technical Data

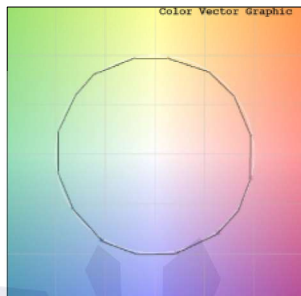
Mounting detail	Ceiling - Recessed	Product weight	1404gms
Fixing detail	Dual tension spring	Safety class	III
Orientation	Fixed	Insulation class	III
IP rating	IP44	LED current (mA)	750mA
Glow wire test	850°	Voltage	AC230V
Trim material	Diecast alm.	Forward voltage	DC36V
Heatsink material	Diecast alm.	Driver	Remote

Photometric Graphs

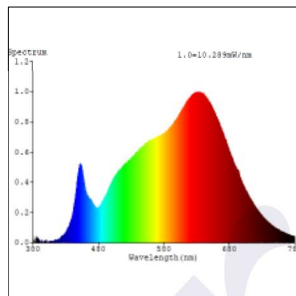
Hue Bin vs Rf Graph



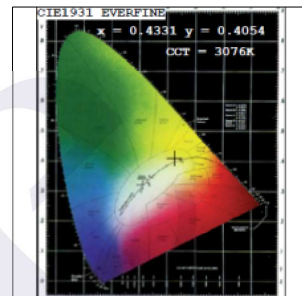
Color Vector Graph



Spectrum vs Wavelength Graph



CIE Chromaticity Graph



Finish Options

Body Finish

- ☐ Matt White
- ☒ Matt Black
- ☒ Custom RAL Color

Reflector Finish

- ☐ Matt White
- ☒ Matt Black
- ☐ Specular
- ☐ Pearl Black
- ☐ Matt Silver
- ☐ Matt Gold

Dimming Options



Constant Current Driver
22w 750mA 220-240V
Non Dimmable



Constant Current Driver
22w 750mA 220-240V
Triac Dimmable



Constant Current Driver
22w 750mA 220-240V
Analog 0-10V / 1-10V Dimmable



Constant Current Driver
22w 750mA 220-240V
Dali Dimmable

L'azure constantly strives to improve our products using the latest technological advancements in the industry.
Due to which the data mentioned in the data sheet is subject to change without prior notice.