

Hyeya Surface - Round M - #1367



12W



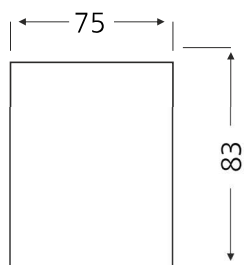
895lm



4000K

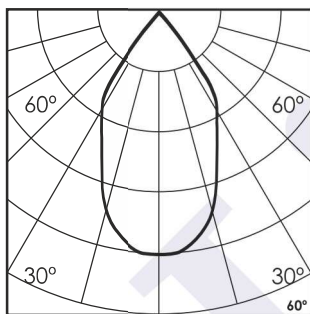


60°



Photometric Data

Light source	LED - Array	Light output ratio	58%
Power (W)	12W	Color rendering index (Ra)	>95
Delivered lumens	895lm	Color rendering index (R9)	>85
Source lumens	1353lm	Binning MacAdam	<2 SDCM
Colour temperature (K)	4000K	LED life	L90 B10 Tj75°C
Luminaire efficacy	74.58lm/W	UGR	<19
Beam angle	60°	Operating temperature	-20°C to +50°C
Cutoff angle	NA	Light distribution	Direct - Symmetric

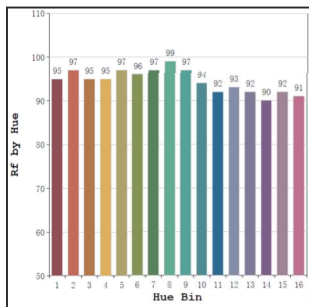


Technical Data

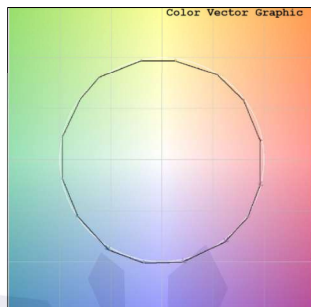
Mounting detail	Ceiling - Surface	Product weight	494gms
Fixing detail	Mounting with Screw	Safety class	III
Orientation	Fixed	Insulation class	III
IP rating	IP44	LED current (mA)	350mA
Glow wire test	850°	Voltage	AC230V
Trim material	NA	Forward voltage	DC36V
Heatsink material	Diecast alm.	Driver	In-built

Photometric Graphs

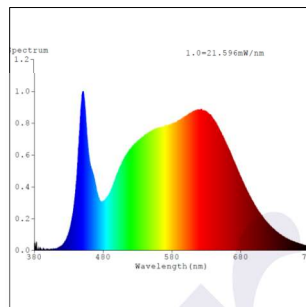
Hue Bin vs Rf Graph



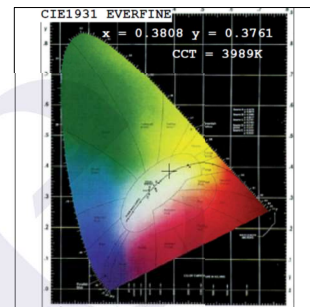
Color Vector Graph



Spectrum vs Wavelength Graph



CIE Chromaticity Graph



Finish Options

Body Finish

- ☐ Matt White
- ☒ Matt Black
- ☐ Custom RAL Color

Reflector Finish

- ☐ Matt White
- ☒ Matt Black
- ☐ Specular
- ☐ Pearl Black
- ☐ Matt Silver
- ☐ Matt Gold

Dimming Options



Constant Current Driver
12w 350mA 220-240V
Non Dimmable



Constant Current Driver
12w 350mA 220-240V
Triac Dimmable



Constant Current Driver
12w 350mA 220-240V
Analog 0-10V / 1-10V Dimmable



Constant Current Driver
12w 350mA 220-240V
Dali Dimmable