

Hyeya Surface - Round XL - #1369



22W



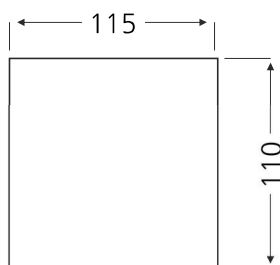
1585lm



2700K

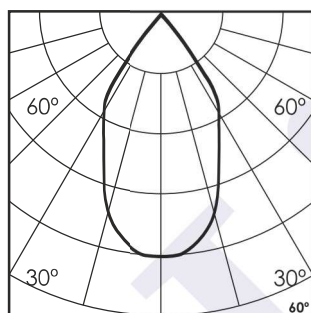


60°



Photometric Data

| | | | |
|------------------------|-------------|----------------------------|--------------------|
| Light source | LED - Array | Light output ratio | 66% |
| Power (W) | 22W | Color rendering index (Ra) | >95 |
| Delivered lumens | 1585lm | Color rendering index (R9) | >85 |
| Source lumens | 2458lm | Binning MacAdam | <2 SDCM |
| Colour temperature (K) | 2700K | LED life | L90 B10 Tj75°C |
| Luminaire efficacy | 72.04lm/W | UGR | <19 |
| Beam angle | 60° | Operating temperature | -20°C to +50°C |
| Cutoff angle | NA | Light distribution | Direct - Symmetric |

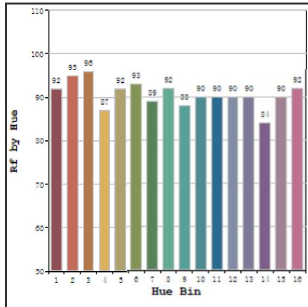


Technical Data

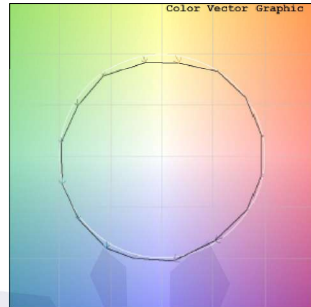
| | | | |
|-------------------|---------------------|------------------|----------|
| Mounting detail | Ceiling - Surface | Product weight | 1404gms |
| Fixing detail | Mounting with Screw | Safety class | III |
| Orientation | Fixed | Insulation class | III |
| IP rating | IP44 | LED current (mA) | 750mA |
| Glow wire test | 850° | Voltage | AC230V |
| Trim material | NA | Forward voltage | DC36V |
| Heatsink material | Diecast alm. | Driver | In-built |

Photometric Graphs

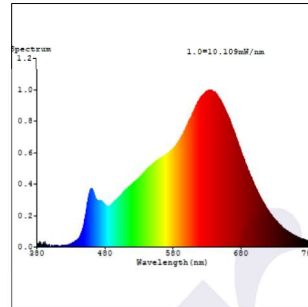
Hue Bin vs Rf Graph



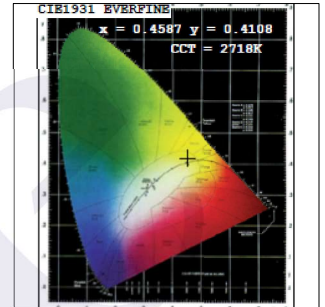
Color Vector Graph



Spectrum vs Wavelength Graph



CIE Chromaticity Graph



Finish Options

Body Finish

- ☐ Matt White
- ☐ Matt Black
- ☐ Custom RAL Color

Reflector Finish

- ☐ Matt White
- ☐ Matt Black
- ☐ Specular
- ☐ Pearl Black
- ☐ Matt Silver
- ☐ Matt Gold

Dimming Options



Constant Current Driver
22w 750mA 220-240V
Non Dimmable



Constant Current Driver
22w 750mA 220-240V
Triac Dimmable



Constant Current Driver
22w 750mA 220-240V
Analog 0-10V / 1-10V Dimmable



Constant Current Driver
22w 750mA 220-240V
Dali Dimmable