

Hypogean Fix Micro - #3034



1W



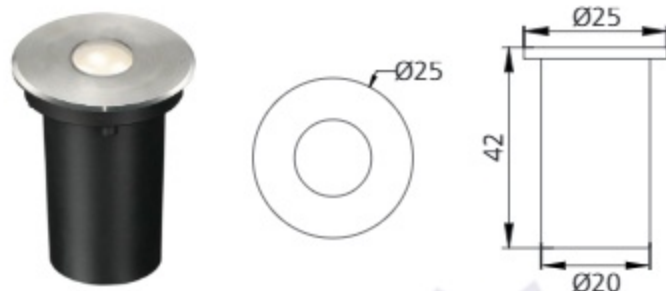
73lm



2700K



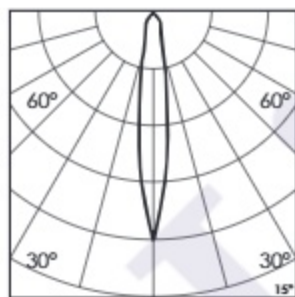
15°



Photometric Data

Light source	LED - High Power
Power (W)	1W
Delivered lumens	73lm
Source lumens	108lm
Colour temperature (K)	2700K
Luminaire efficacy	73lm/W
Beam angle	15°
Cutoff angle	NA

Light output ratio	68%
Color rendering index (Ra)	> 92
Color rendering index (R9)	> 50
Binning MacAdam	< 3 SDCM
LED life	L90 B10 Tj75°C
UGR	< 19
Operating temperature	-20°C to + 50°C
Light distribution	Direct - Symmetric



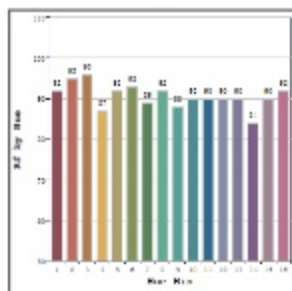
Technical Data

Mounting detail	Inground Light
Fixing detail	Backbox
Orientation	Fixed
IP rating	IP67
IK rating	IK08
Heatsink material	Diecast alm.
Ring material	SS

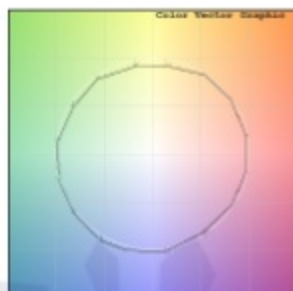
Glow wire test	850°
Product weight	47gms
Safety class	III
Insulation class	III
Voltage	DC24V
Driver	Remote - DC24V

Photometric Graphs

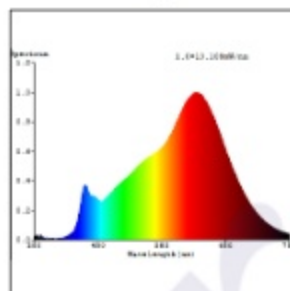
Hue Bin vs Rf Graph



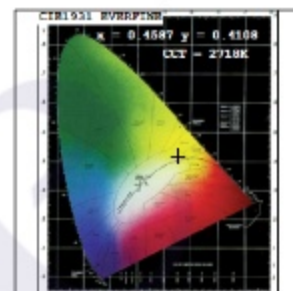
Color Vector Graph



Spectrum vs Wavelength Graph



CIE Chromaticity Graph



Finish Options

Trim Finish

- ☐ SS
- ☒ Custom RAL Color

Dimming Options



Constant Voltage Driver
75w DC24V
Non Dimmable



Constant Voltage Driver
75w DC24V
Triac Dimmable



Constant Voltage Driver
75w DC24V
Analog 0-10V / 1-10V Dimmable



Constant Voltage Driver
75w DC24V
Dali Dimmable