

# Hypogean Fix Mini - #3035



3W



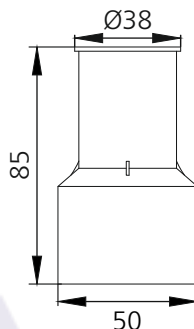
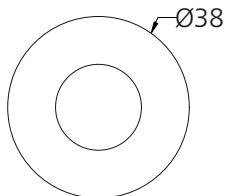
101lm



Blue

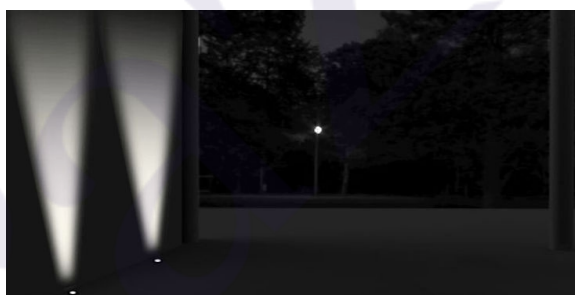
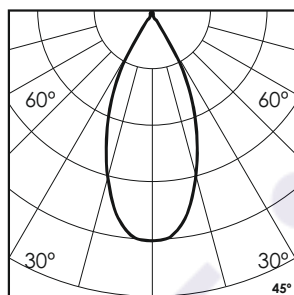


45°



## Photometric Data

Light source	LED - High Power	Beam angle	45°
Power (W)	3W	Light output ratio	59%
Delivered lumens	101lm	LED life	L90 B10 Tj75°C
Source lumens	171lm	UGR	<19
Colour temperature (K)	Blue	Operating temperature	-20°C to +50°C
Luminaire efficacy	33.82lm/W	Light distribution	Direct - Symmetric



## Technical Data

Mounting detail	Inground Light	Glow wire test	850°
Fixing detail	Backbox	Product weight	123gms
Orientation	Fixed	Safety class	III
IP rating	IP67	Insulation class	III
IK rating	IK08	Voltage	DC24V
Heatsink material	Diecast alm.	Driver	Remote - DC24V
Ring material	SS		

## Finish Options

### Trim Finish

- ☐ SS
- ☒ Custom RAL Color

## Dimming Options



Remote DMX Decoder

The DMX Decoder requires a 24V CV Driver