

# Hypogean Fix R1 - #3036



3W



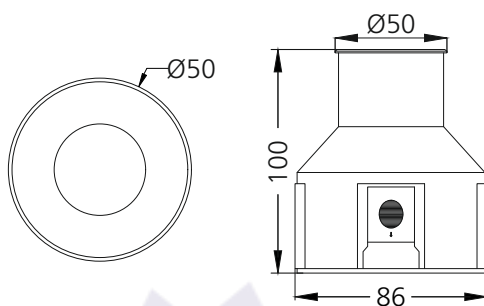
246lm



2700K

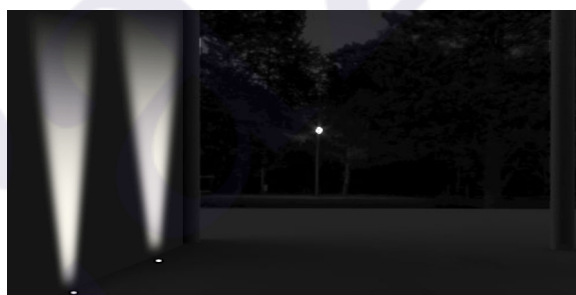
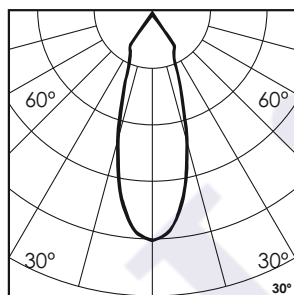


30°



## Photometric Data

Light source	LED - High Power	Light output ratio	75%
Power (W)	3W	Color rendering index (Ra)	> 92
Delivered lumens	246lm	Color rendering index (R9)	> 50
Source lumens	324lm	Binning MacAdam	< 3 SDCM
Colour temperature (K)	2700K	LED life	L90 B10 Tj75°C
Luminaire efficacy	82.03lm/W	UGR	< 19
Beam angle	30°	Operating temperature	-20°C to +50°C
Cutoff angle	NA	Light distribution	Direct - Symmetric

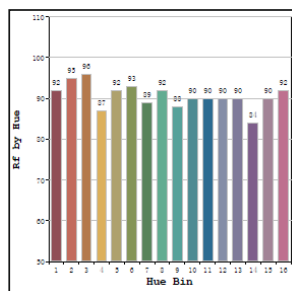


## Technical Data

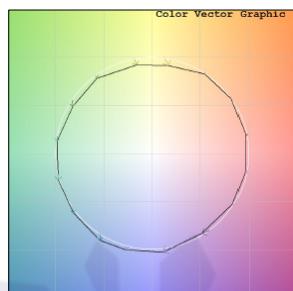
Mounting detail	Inground Light	Glow wire test	850°
Fixing detail	Backbox	Product weight	334gms
Orientation	Fixed	Safety class	III
IP rating	IP67	Insulation class	III
IK rating	IK08	Voltage	AC230V / DC24V
Heatsink material	Diecast alm.	Driver	In-built - AC230V
Ring material	SS		Remote - DC24V

## Photometric Graphs

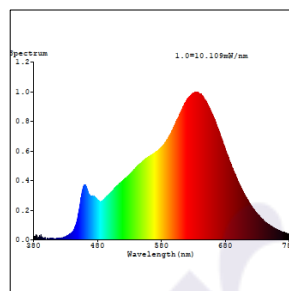
Hue Bin vs Rf Graph



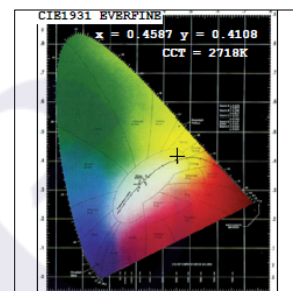
Color Vector Graph



Spectrum vs Wavelength Graph



CIE Chromaticity Graph



## Finish Options

### Trim Finish

- ☐ SS
- ☒ Custom RAL Color

## Filter Options



Honeycomb Filter

Above filters can be added to the fixture and need to be ordered as a separate accessory

## Dimming Options



Constant Voltage Driver  
75w DC24V  
Non Dimmable



Constant Voltage Driver  
75w DC24V  
Triac Dimmable



Constant Voltage Driver  
75w DC24V  
Analog 0-10V / 1-10V Dimmable



Constant Voltage Driver  
75w DC24V  
Dali Dimmable

In-built Driver placement is only possible for the Non Dimmable Driver option.

L'azure constantly strives to improve our products using the latest technological advancements in the industry.  
Due to which the data mentioned in the data sheet is subject to change without prior notice.