

Hypogean Fix R12 - #3041



12W



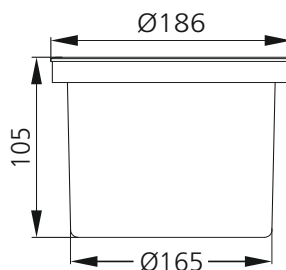
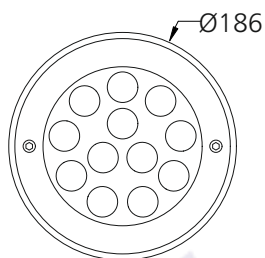
967lm



2700K

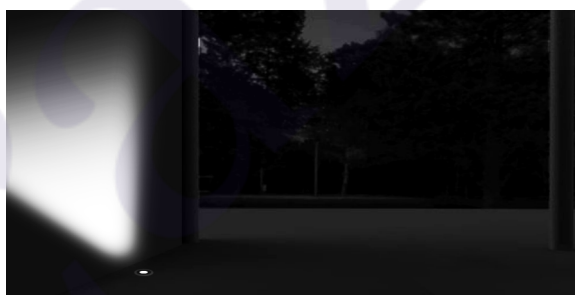
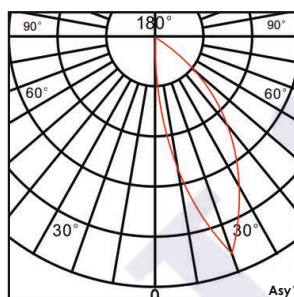


Asymmetric



Photometric Data

Light source	LED - High Power	Light output ratio	74%
Power (W)	12W	Color rendering index (Ra)	> 92
Delivered lumens	967lm	Color rendering index (R9)	> 50
Source lumens	1296lm	Binning MacAdam	< 3 SDCM
Colour temperature (K)	2700K	LED life	L90 B10 Tj75°C
Luminaire efficacy	80.64lm/W	UGR	< 19
Beam angle	Asymmetric	Operating temperature	-20°C to +50°C
Cutoff angle	NA	Light distribution	Asymmetric

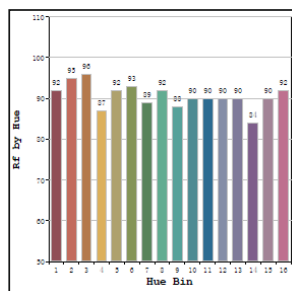


Technical Data

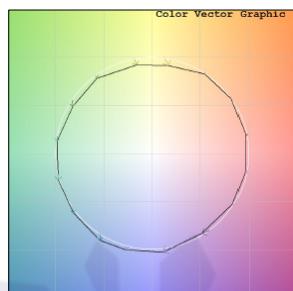
Mounting detail	Inground Light	Glow wire test	850°
Fixing detail	Backbox	Product weight	1582gms
Orientation	Fixed	Safety class	III
IP rating	IP67	Insulation class	III
IK rating	IK08	Voltage	AC230V / DC24V
Heatsink material	Diecast alm.	Driver	In-built - AC230V
Ring material	SS		Remote - DC24V

Photometric Graphs

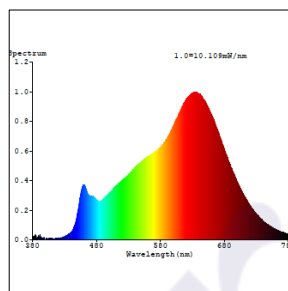
Hue Bin vs Rf Graph



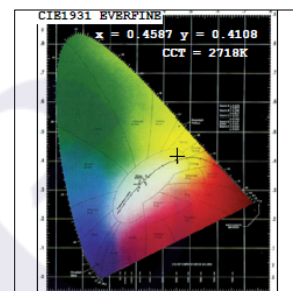
Color Vector Graph



Spectrum vs Wavelength Graph



CIE Chromaticity Graph



Finish Options

Trim Finish

- ☐ SS
- ☒ Custom RAL Color

Filter Options



Honeycomb Filter

Above filters can be added to the fixture and need to be ordered as a separate accessory

Dimming Options



Constant Voltage Driver
75w DC24V
Non Dimmable



Constant Voltage Driver
75w DC24V
Triac Dimmable



Constant Voltage Driver
75w DC24V
Analog 0-10V / 1-10V Dimmable



Constant Voltage Driver
75w DC24V
Dali Dimmable

In-built Driver placement is only possible for the Non Dimmable Driver option.

L'azure constantly strives to improve our products using the latest technological advancements in the industry.
Due to which the data mentioned in the data sheet is subject to change without prior notice.