

Hypogean Linear M - #3047



12W



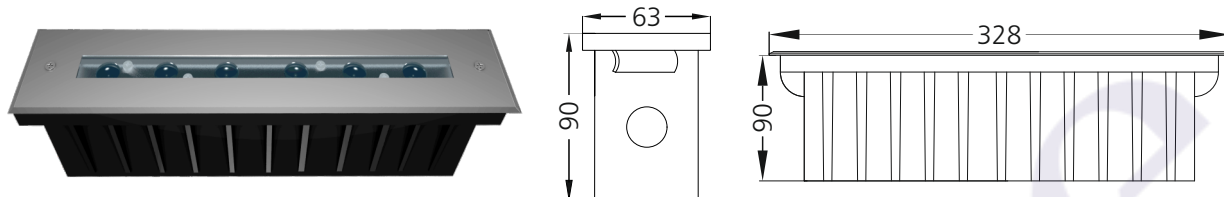
1043lm



2700K

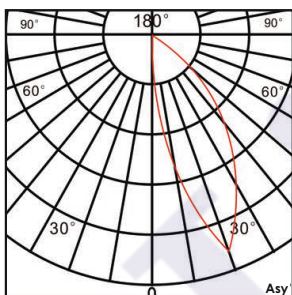


Asymmetric



Photometric Data

Light source	LED - High Power	Light output ratio	80%
Power (W)	12W	Color rendering index (Ra)	> 92
Delivered lumens	1043lm	Color rendering index (R9)	> 50
Source lumens	1296lm	Binning MacAdam	< 3 SDCM
Colour temperature (K)	2700K	LED life	L90 B10 Tj75°C
Luminaire efficacy	86.89lm/W	UGR	< 19
Beam angle	Asymmetric	Operating temperature	-20°C to +50°C
Cutoff angle	NA	Light distribution	Asymmetric

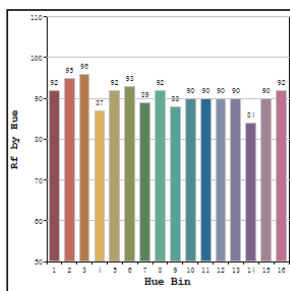


Technical Data

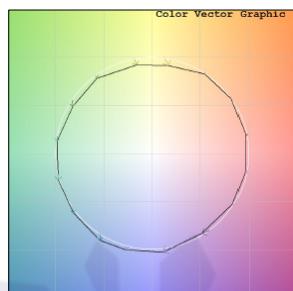
Mounting detail	Inground Light	Glow wire test	850°
Fixing detail	Backbox	Product weight	1698gms
Orientation	Fixed	Safety class	III
IP rating	IP67	Insulation class	III
IK rating	IK08	Voltage	DC24V
Heatsink material	Diecast alm.	Driver	Remote - DC24V
Trim material	SS		

Photometric Graphs

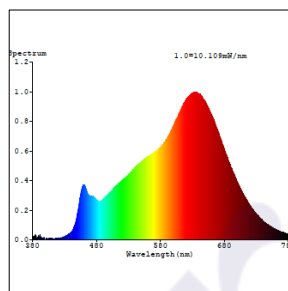
Hue Bin vs Rf Graph



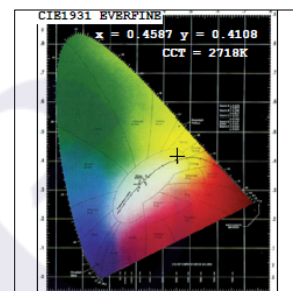
Color Vector Graph



Spectrum vs Wavelength Graph



CIE Chromaticity Graph



Finish Options

Trim Finish

- ☐ SS
- ☒ Custom RAL Color

Filter Options



Honeycomb Filter

Above filters can be added to the fixture and need to be ordered as a separate accessory

Dimming Options



Constant Voltage Driver
75w DC24V
Non Dimmable



Constant Voltage Driver
75w DC24V
Triac Dimmable



Constant Voltage Driver
75w DC24V
Analog 0-10V / 1-10V Dimmable



Constant Voltage Driver
75w DC24V
Dali Dimmable

L'azure constantly strives to improve our products using the latest technological advancements in the industry.
Due to which the data mentioned in the data sheet is subject to change without prior notice.