

Joule Discreet Magnetic - Track



**Discreet Surface Track
#2248**

- Shows an isometric render & 2D view of Joule Discreet Magnetic - Track. Joule Discreet can only be mounted at the surface but because the product is 7 mm slim it blends with the ceiling.
- Available accessories that are needed for the installation of Joule Discreet Magnetic-Track are mentioned below. Accessories needs to be ordered separately.
- With the accessory "Wall Hanging Swinging Head" Joule discreet can be used for wall mounted installations as well.

Accessories



**Wall Hanging
Swinging Head**



Head Module



I Joinder



Corner Module



**Inward Corner
Module**



Input Module



**Discreet - Power Supply
#2251**

- Shows an isometric render & 2D view of a Joule Discreet Power Supply.
- The power supply must be ordered separately.

Discreet - Grid 230 - #2235



12W



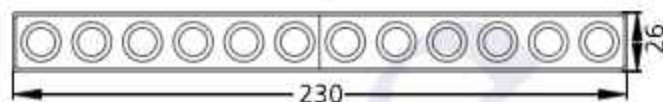
1048lm



3000K

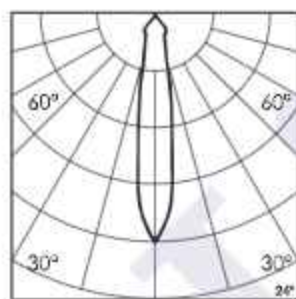


24°



Photometric Data

Light source	LED - High Power	Light output ratio	66%
Power (W)	12W	Color rendering index (Ra)	>92
Delivered lumens	1048lm	Color rendering index (R9)	>50
Source lumens	1572lm	Binning MacAdam	<3 SDCM
Colour temperature (K)	3000K	LED life	L90 B10 Tj75°C
Luminaire efficacy	87.39/W	UGR	<19
Beam angle	24°	Operating temperature	-20°C to +50°C
Cutoff angle	NA	Light distribution	Direct - Symmetric

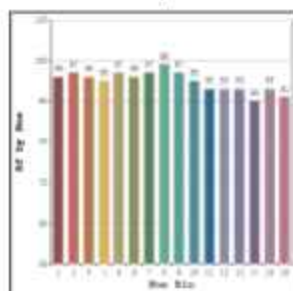


Technical Data

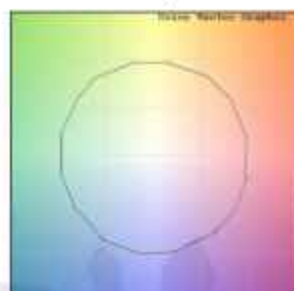
Mounting detail	Recessed	Product weight	179gms
Fixing detail	Dual tension spring	Safety class	III
Orientation	Fixed	Insulation class	III
IP rating	IP20	Voltage	AC230V
Glow wire test	850°	Forward voltage	DC24V
Trim material	Aluminium	Driver	CV - Remote
Heatsink material	Aluminium Extrusion		

Photometric Graphs

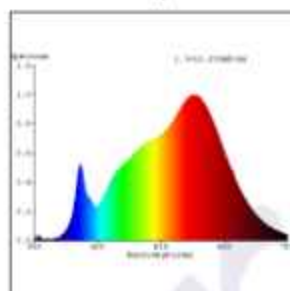
Hue Bin vs Rf Graph



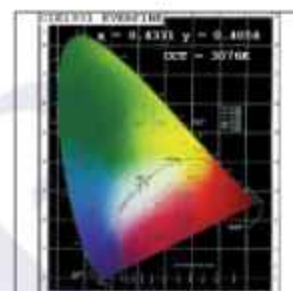
Color Vector Graph



Spectrum vs Wavelength Graph



CIE Chromaticity Graph



Finish Options

Body Finish

- Matt Black
- Custom RAL Color

Reflector Finish

- Matt Black

Dimming Options



Non Dimmable
Remote Driver

L'azure constantly strives to improve our products using the latest technological advancements in the industry.
Due to which the data mentioned in the data sheet is subject to change without prior notice.