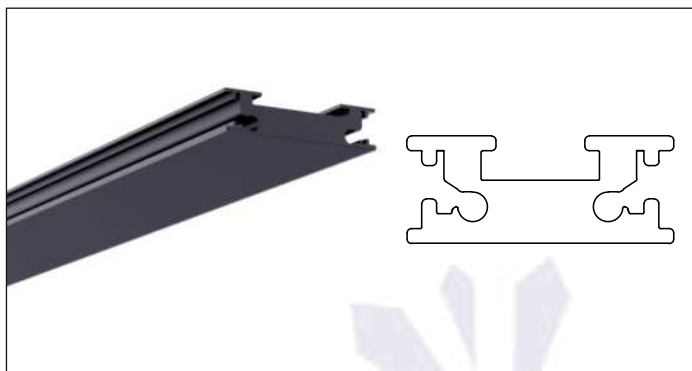


Joule Discreet Magnetic - Track



Discreet Surface Track
#2248

- Shows an isometric render & 2D view of Joule Discreet Magnetic - Track. Joule Discreet can only be mounted at the surface but because the product is 7 mm slim it blends with the ceiling.
- Available accessories that are needed for the installation of Joule Discreet Magnetic-Track are mentioned below. Accessories needs to be ordered separately.
- With the accessory "Wall Hanging Swinging Head" Joule discreet can be used for wall mounted installations as well.

Accessories



Wall Hanging
Swinging Head



Head Module



I Joinder



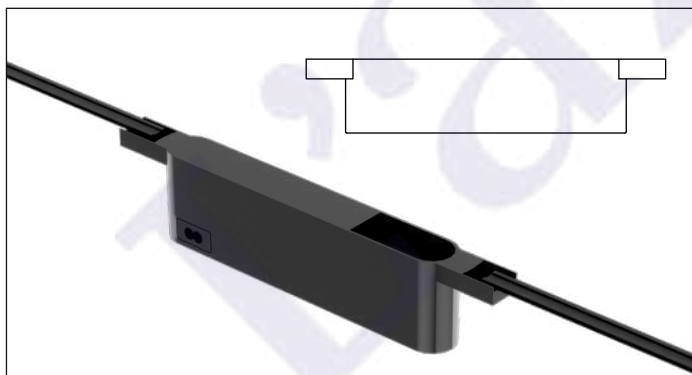
Corner Module



Inward Corner
Module



Input Module



Discreet - Power Supply
#2251

- Shows an isometric render & 2D view of a Joule Discreet Power Supply.
- The power supply must be ordered separately.

Discreet - Reading Light - #2238



2W



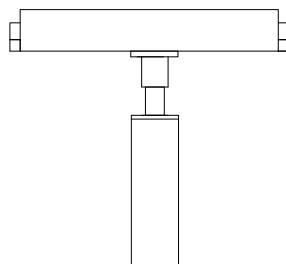
178lm



3000K



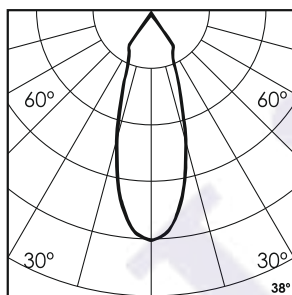
38°



Photometric Data

Light source	LED - High Power
Power (W)	2W
Delivered lumens	178lm
Source lumens	262lm
Colour temperature (K)	3000K
Luminaire efficacy	89.20/W
Beam angle	38°
Cutoff angle	NA

Light output ratio	68%
Color rendering index (Ra)	>92
Color rendering index (R9)	>50
Binning MacAdam	<3 SDCM
LED life	L90 B10 Tj75°C
UGR	<19
Operating temperature	-20°C to +50°C
Light distribution	Direct - Symmetric



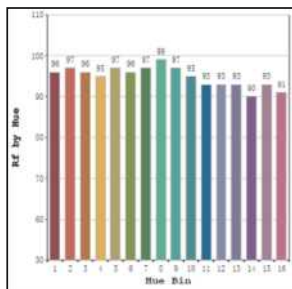
Technical Data

Mounting detail	Recessed
Fixing detail	Dual tension spring
Orientation	Fixed
IP rating	IP20
Glow wire test	850°
Trim material	Aluminium
Heatsink material	Aluminium Extrusion

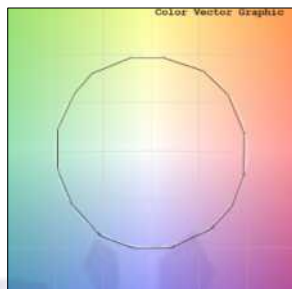
Product weight	218gms
Safety class	III
Insulation class	III
Voltage	AC230V
Forward voltage	DC24V
Driver	CV - Remote

Photometric Graphs

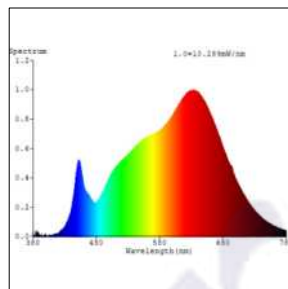
Hue Bin vs Rf Graph



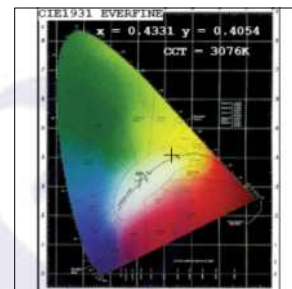
Color Vector Graph



Spectrum vs Wavelength Graph



CIE Chromaticity Graph



Finish Options

Body Finish

- Matt Black
- Custom RAL Color

Reflector Finish

- Matt Black

Dimming Options



Non Dimmable
Remote Driver