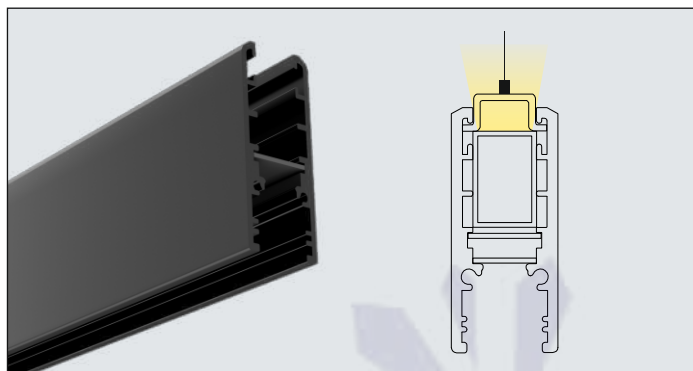


## Joule Invi Magnetic - Track



Invi Pendant Track  
#2071

- Shows an isometric render & 2D view of Joule Invi Pendant Up lighting. Joule Invi Pendant Track can be selected considering the surface or pendant installation.
- Up-Lighting Option Available on demand 'Flexum Top S - IP65 #2183' needs to be ordered separately
- Available accessories that is needed for installation of Joule Invi Pendant Track are mentioned below. Accessories needs to be ordered separately

### Accessories



Flat Corner



Inner Corner



End Cap



Connectors



I Joinder Module



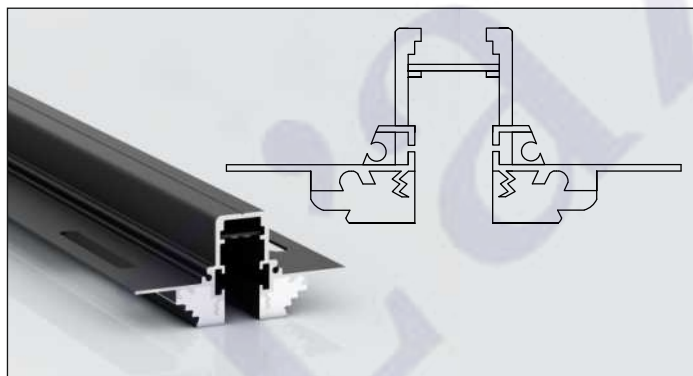
Mounting Clamp



Input Module



Suspension Kit



Invi Recessed Track  
#2072

- Shows an isometric render & 2D view of a Joule Invi Recessed Track that can be selected considering the recessed installation.
- Preset Gypsum is fixed on Joule Invi Recessed Track to ensure seamless and crack-free installation.
- Available accessories that is needed for installation of Joule Invi Recessed Track are mentioned below. Accessories needs to be ordered separately.

### Accessories



Flat Corner



Inner Corner



End Cap



Connectors



"L" Male Female  
Connector



Input Module



I Joinder Module

# Invi S - Spot 22 - #2227



3W



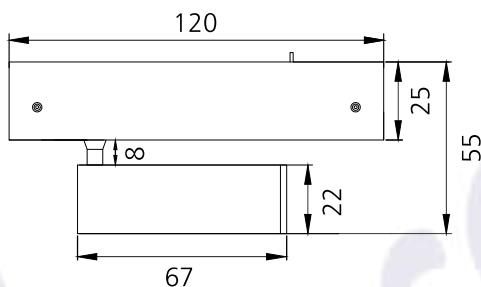
267lm



4000K

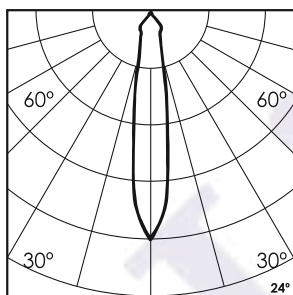


24°



## Photometric Data

Light source	LED - Array	Light output ratio	69%
Power (W)	3W	Color rendering index (Ra)	>95
Delivered lumens	267lm	Color rendering index (R9)	>85
Source lumens	387lm	Binning MacAdam	<2 SDCM
Colour temperature (K)	4000K	LED life	L90 B10 Tj75°C
Luminaire efficacy	89lm/W	UGR	<19
Beam angle	24°	Operating temperature	-20°C to +50°C
Cutoff angle	NA	Light distribution	Direct - Symmetric

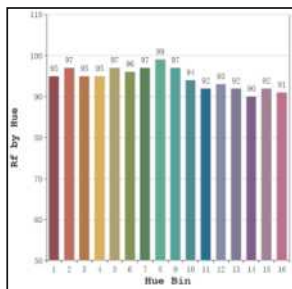


## Technical Data

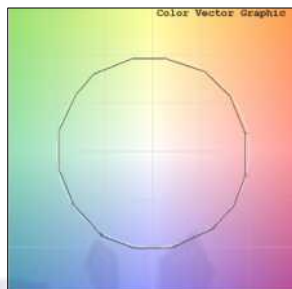
Mounting detail	Recessed	Product weight	72gms
Fixing detail	Dual tension spring	Safety class	III
Orientation	Adjustable	Insulation class	III
IP rating	IP20	Voltage	AC230V
Glow wire test	850°	Forward voltage	DC24V
Trim material	Aluminium	Driver	CV - Remote
Heatsink material	Aluminium Extrusion		

## Photometric Graphs

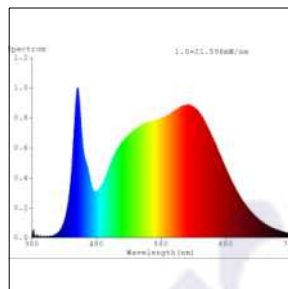
Hue Bin vs Rf Graph



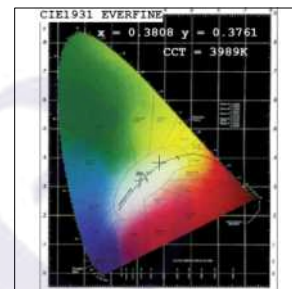
Color Vector Graph



Spectrum vs Wavelength Graph



CIE Chromaticity Graph



## Finish Options

### Body Finish

- Matt Black
- Custom RAL Color

### Interior Finish

- Matt Black
- Matt Gold

## Filter Options



Honeycomb Filter

Above filters can be added to the fixture and need to be ordered as a separate accessory

## Dimming Options



Non Dimmable Remote Driver

L'azure constantly strives to improve our products using the latest technological advancements in the industry.  
Due to which the data mentioned in the data sheet is subject to change without prior notice.