

Marcopia Round 3 - #3014



10W



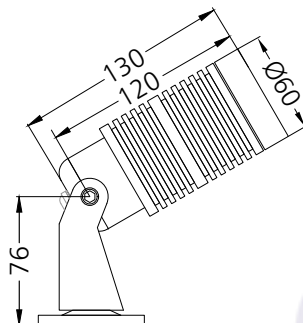
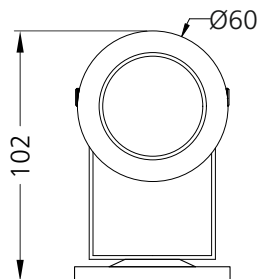
986lm



3000K



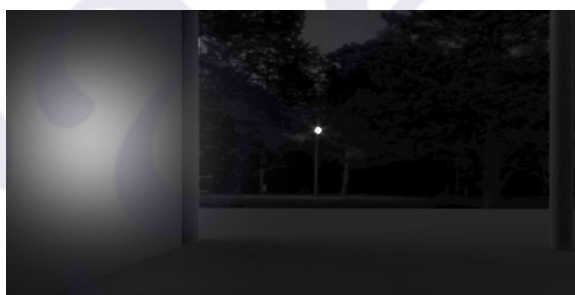
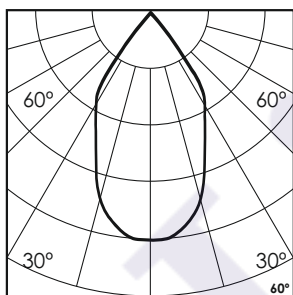
60°



Photometric Data

Light source	LED - Array
Power (W)	10W
Delivered lumens	986lm
Source lumens	1250lm
Colour temperature (K)	3000K
Luminaire efficacy	98.6lm/W
Beam angle	60°
Cutoff angle	NA

Light output ratio	78%
Color rendering index (Ra)	>95
Color rendering index (R9)	>85
Binning MacAdam	<3 SDCM
LED life	L90 B10 Tj75°C
UGR	<19
Operating temperature	-20°C to +50°C
Light distribution	Direct - Symmetric



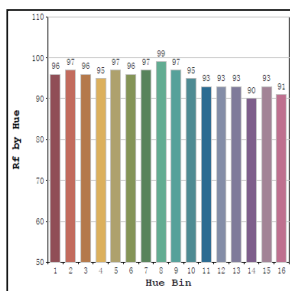
Technical Data

Mounting detail	Surface Uplighter
Fixing detail	Cowl / Spike / Tree Strap / Mounting Plate
Orientation	Adjustable
IP rating	IP65
IK rating	IK05
Glow wire test	850°

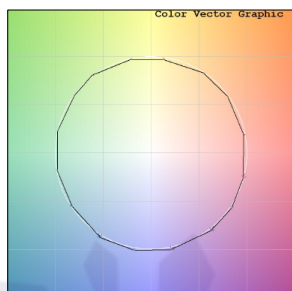
Heatsink material	Diecast alm.
Product weight	528gms
Safety class	III
Insulation class	III
Voltage	AC230V / DC24V
Driver	In-built - AC230V Remote - DC24V

Photometric Graphs

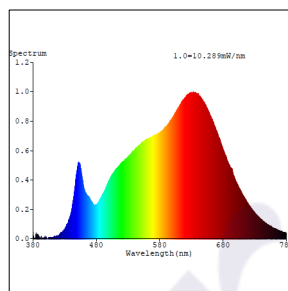
Hue Bin vs Rf Graph



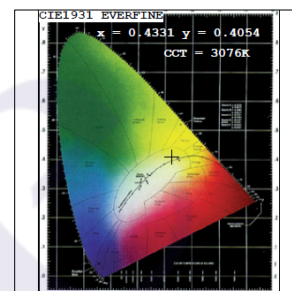
Color Vector Graph



Spectrum vs Wavelength Graph



CIE Chromaticity Graph



Finish Options

Body Finish

- ☐ Matt Grey
- ☐ Matt Black
- ☐ Custom RAL Color

Filter Options



Honeycomb Filter

Above filters can be added to the fixture and need to be ordered as a separate accessory

Accessories Options



Cowl



Spike



Tree Strap

Above accessories can be added to the fixture and need to be ordered as a separate accessory

Dimming Options



Constant Voltage Driver
75w DC24V
Non Dimmable



Constant Voltage Driver
75w DC24V
Triac Dimmable



Constant Voltage Driver
75w DC24V
Analog 0-10V / 1-10V Dimmable



Constant Voltage Driver
75w DC24V
Dali Dimmable

L'azure constantly strives to improve our products using the latest technological advancements in the industry.
Due to which the data mentioned in the data sheet is subject to change without prior notice.