

# Marcopia Round 4 - #3017



6W



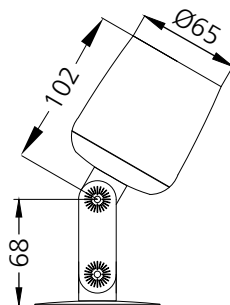
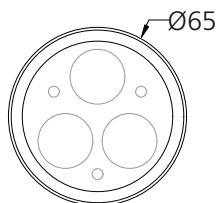
510lm



3000K

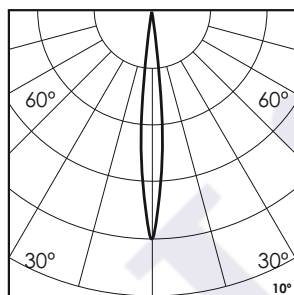


10°



## Photometric Data

Light source	LED - High Power	Light output ratio	75%
Power (W)	6W	Color rendering index (Ra)	> 92
Delivered lumens	510lm	Color rendering index (R9)	> 50
Source lumens	672lm	Binning MacAdam	< 3 SDCM
Colour temperature (K)	3000K	LED life	L90 B10 Tj75°C
Luminaire efficacy	85lm/W	UGR	< 19
Beam angle	10°	Operating temperature	-20°C to +50°C
Cutoff angle	NA	Light distribution	Direct - Symmetric

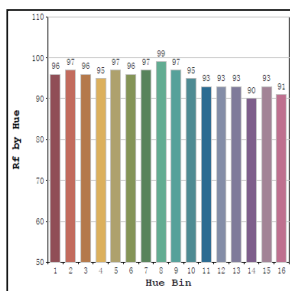


## Technical Data

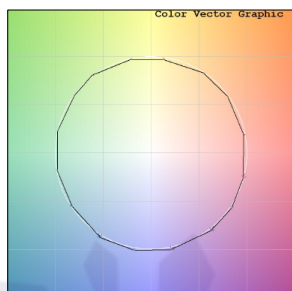
Mounting detail	Surface Uplichter	Heatsink material	Diecast alm.
Fixing detail	Cowl / Spike / Tree Strap / Pole Bracket / Mounting Plate	Product weight	723gms
Orientation	Adjustable	Safety class	III
IP rating	IP65	Insulation class	III
IK rating	IK05	Voltage	AC230V / DC24V
Glow wire test	850°	Driver	In-built - AC230V Remote - DC24V

## Photometric Graphs

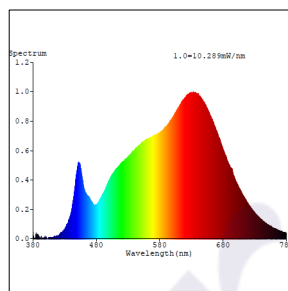
Hue Bin vs Rf Graph



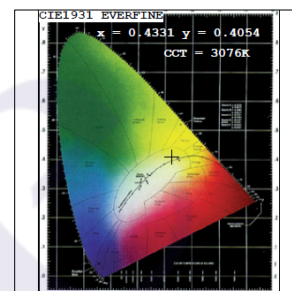
Color Vector Graph



Spectrum vs Wavelength Graph



CIE Chromaticity Graph



## Finish Options

### Body Finish

- ☐ Matt Grey
- ☒ Custom RAL Color

## Filter Options



Honeycomb Filter

Above filters can be added to the fixture and need to be ordered as a separate accessory

## Accessories Options



Cowl



Spike



Tree Strap



Pole Bracket

Above accessories can be added to the fixture and need to be ordered as a separate accessory

## Dimming Options



Constant Voltage Driver  
75w DC24V  
Non Dimmable



Constant Voltage Driver  
75w DC24V  
Triac Dimmable



Constant Voltage Driver  
75w DC24V  
Analog 0-10V / 1-10V Dimmable



Constant Voltage Driver  
75w DC24V  
Dali Dimmable

L'azure constantly strives to improve our products using the latest technological advancements in the industry.  
Due to which the data mentioned in the data sheet is subject to change without prior notice.