

Marcopia Square 4 - #3007



16W



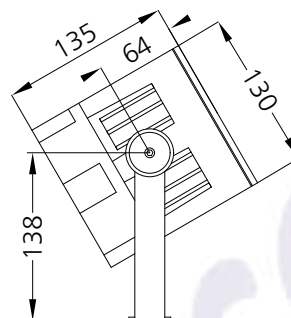
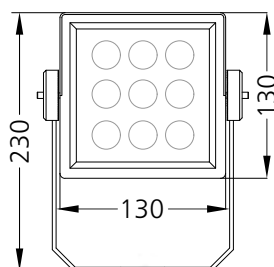
1541lm



3000K

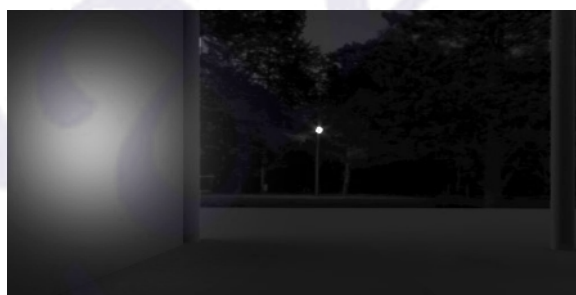
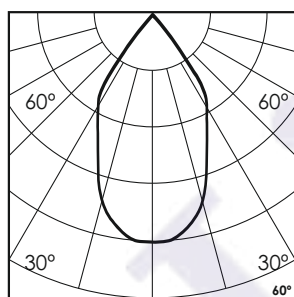


60°



Photometric Data

| | | | |
|------------------------|------------------|----------------------------|--------------------|
| Light source | LED - High Power | Light output ratio | 86% |
| Power (W) | 16W | Color rendering index (Ra) | >92 |
| Delivered lumens | 1541lm | Color rendering index (R9) | >50 |
| Source lumens | 1792lm | Binning MacAdam | <3 SDCM |
| Colour temperature (K) | 3000K | LED life | L90 B10 Tj75°C |
| Luminaire efficacy | 96.35lm/W | UGR | <19 |
| Beam angle | 60° | Operating temperature | -20°C to +50°C |
| Cutoff angle | NA | Light distribution | Direct - Symmetric |

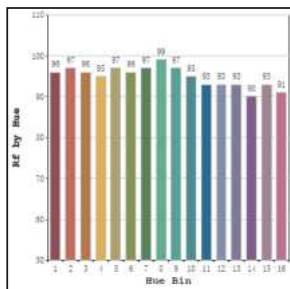


Technical Data

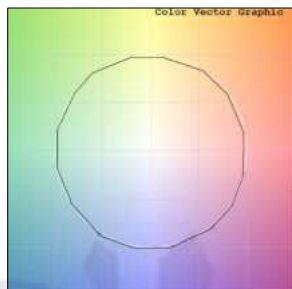
| | | | |
|-----------------|------------------------------------|-------------------|-------------------------------------|
| Mounting detail | Surface Uplighter | Heatsink material | Diecast alm. |
| Fixing detail | Cowl / Spike / Mounting Bracket | Product weight | 1693gms |
| Orientation | Adjustable | Safety class | III |
| IP rating | IP65 | Insulation class | III |
| IK rating | IK05 | Voltage | AC230V / DC24V |
| Glow wire test | 850° | Driver | In-built - AC230V Remote - DC24V |

Photometric Graphs

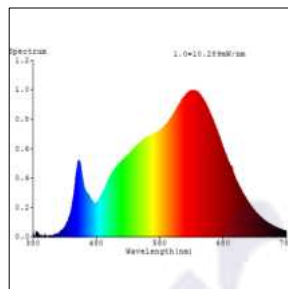
Hue Bin vs Rf Graph



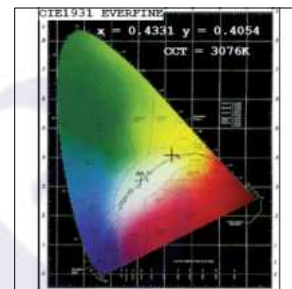
Color Vector Graph



Spectrum vs Wavelength Graph



CIE Chromaticity Graph



Finish Options

Body Finish

- Matt Grey
- Matt Black
- Custom RAL Color

Filter Options



Honeycomb Filter

Above filters can be added to the fixture and need to be ordered as a separate accessory

Accessories Options



Cowl



Spike

Above accessories can be added to the fixture and need to be ordered as a separate accessory

Dimming Options



Constant Voltage Driver
75w DC24V
Non Dimmable



Constant Voltage Driver
75w DC24V
Triac Dimmable



Constant Voltage Driver
75w DC24V
Analog 0-10V / 1-10V Dimmable



Constant Voltage Driver
75w DC24V
Dali Dimmable

L'azure constantly strives to improve our products using the latest technological advancements in the industry.
Due to which the data mentioned in the data sheet is subject to change without prior notice.