

Opus Wallwash XL T - #1185



35W



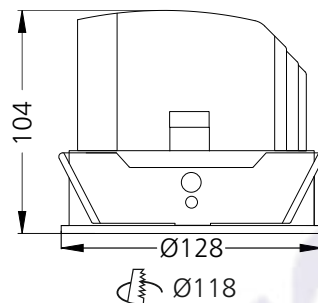
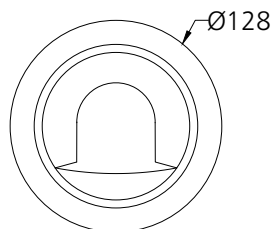
2635lm



4000K

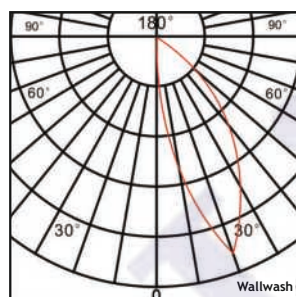


Wallwash



Photometric Data

Light source	LED - Array	Light output ratio	57%
Power (W)	35W	Color rendering index (Ra)	>95
Delivered lumens	2635lm	Color rendering index (R9)	>85
Source lumens	4620lm	Binning MacAdam	<2 SDCM
Colour temperature (K)	4000K	LED life	L90 B10 Tj75°C
Luminaire efficacy	75.28lm/W	UGR	<19
Beam angle	Wallwash	Operating temperature	-20°C to +50°C
Cutoff angle	NA	Light distribution	Asymmetric - Wallwash



Technical Data

Mounting detail	Ceiling - Recessed 1-25mm	Product weight	959gms
Fixing detail	Dual tension spring	Safety class	III
Orientation	Fixed	Insulation class	III
IP rating	IP20	LED current (mA)	900mA
Glow wire test	850°	Voltage	AC230V
Trim material	Diecast alm.	Forward voltage	DC36V
Heatsink material	Diecast alm.	Driver	CC - Remote

Photometric Graphs

Hue Bin vs Rf Graph



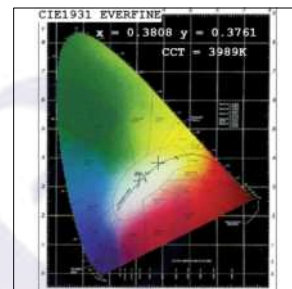
Color Vector Graph



Spectrum vs Wavelength Graph



CIE Chromaticity Graph



Finish Options

Trim Finish

- ☐ Matt White
- ☒ Matt Black
- ☐ Custom RAL Color

Reflector Finish

- ☐ Matt White
- ☒ Matt Black
- ☐ Specular
- ☐ Pearl Black
- ☐ Black Chrome
- ☐ Matt Silver
- ☐ Matt Gold

Dimming Options



Constant Current Driver
35w 900mA 220-240V
Non Dimmable



Constant Current Driver
35w 900mA 220-240V
Triac Dimmable



Constant Current Driver
35w 900mA 220-240V
Analog 0-10V / 1-10V Dimmable



Constant Current Driver
35w 900mA 220-240V
Dali Dimmable



Constant Current Driver
35w 900mA 220-240V
Dali Tunable



Constant Current Driver
35w 900mA 220-240V
RF Tunable (operated with RF remote)