

Peculo Bollard Stand - #3146



10W



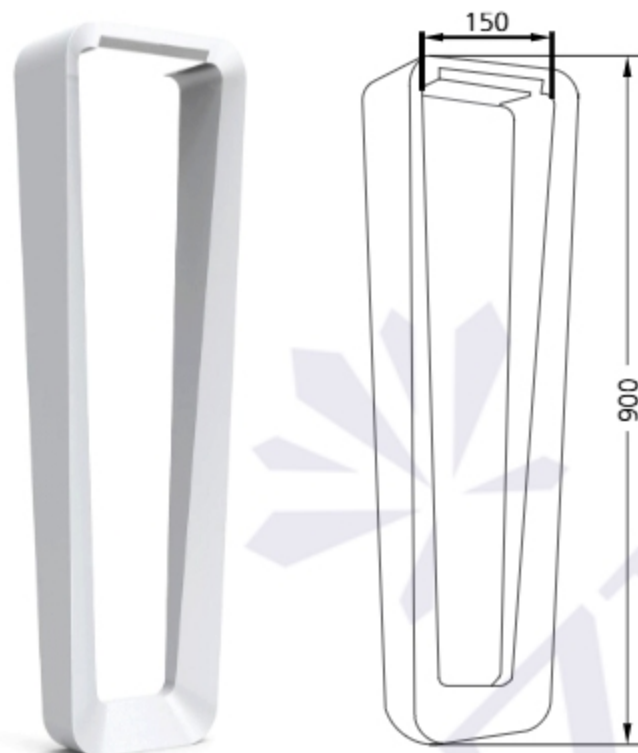
865lm



3000K



Diffused



Photometric Data

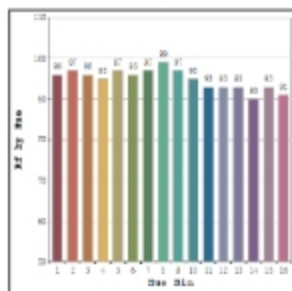
| | | | |
|------------------------|------------------|----------------------------|-------------------|
| Light source | LED - High Power | Light output ratio | 65% |
| Power (W) | 10W | Color rendering index (Ra) | >82 |
| Delivered lumens | 865lm | Binning MacAdam | <3 SDCM |
| Source lumens | 1330lm | LED life | L90 B10 Tj75°C |
| Colour temperature (K) | 3000K | UGR | <19 |
| Luminaire efficacy | 86.5lm/W | Operating temperature | -20°C to +50°C |
| Height | 900mm | Light distribution | Direct - Diffused |

Technical Data

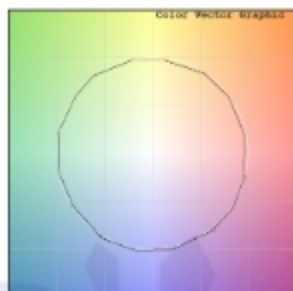
| | | | |
|-----------------|-----------------|-------------------|--------------|
| Mounting detail | Floor - Surface | Body material | Aluminium |
| Fixing detail | Anchor Fastner | Heatsink material | Diecast alm. |
| Orientation | Fixed | Safety class | III |
| IP rating | IP65 | Insulation class | III |
| IK rating | IK06 | Voltage | AC230V |
| Glow wire test | 850° | Driver | In-built |

Photometric Graphs

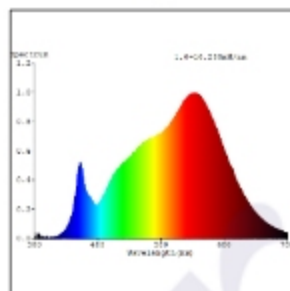
Hue Bin vs Rf Graph



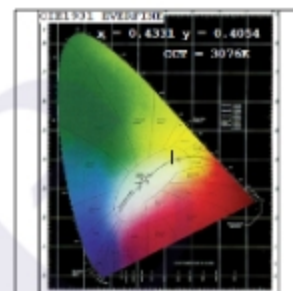
Color Vector Graph



Spectrum vs Wavelength Graph



CIE Chromaticity Graph



Finish Options

Body Finish

- Matt Black
- Matt Grey
- Custom RAL Color

Dimming Options



Constant Current Driver
10w 220-240V
Non Dimmable



Constant Current Driver
10w 220-240V
Triac Dimmable



Constant Current Driver
10w 220-240V
Analog 0-10V / 1-10V Dimmable



Constant Current Driver
10w 220-240V
Dali Dimmable

L'azure constantly strives to improve our products using the latest technological advancements in the industry.
Due to which the data mentioned in the data sheet is subject to change without prior notice.