

# Peculo Pole Hollow - PL - #3113



2x20W



2x2340lm



3000K



Diffused



## Photometric Data

Light source	LED - Array
Power (W)	2x20W
Delivered lumens	2x2340lm
Source lumens	2x2600lm
Colour temperature (K)	3000K
Luminaire efficacy	117lm/W
Height	4.0m

Light output ratio	90%
Color rendering index (Ra)	>82
Binning MacAdam	<3 SDCM
LED life	L90 B10 Tj75°C
UGR	<19
Operating temperature	-20°C to + 50°C
Light distribution	Direct - Diffused

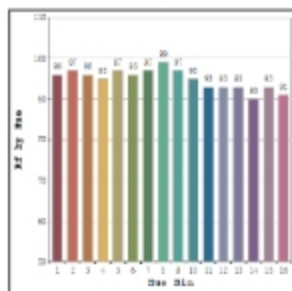
## Technical Data

Mounting detail	Floor - Surface
Fixing detail	Foundation Bolt
Orientation	Fixed
IP rating	IP65
IK rating	IK06
Glow wire test	850°

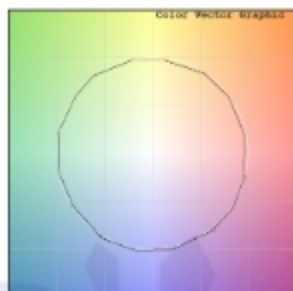
Body material	Galvanized Steel
Heatsink material	Diecast alm.
Safety class	III
Insulation class	III
Voltage	AC230V
Driver	In-built

## Photometric Graphs

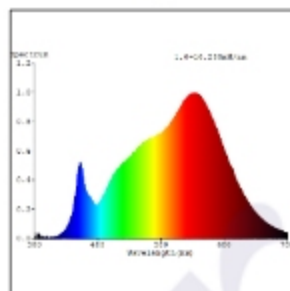
Hue Bin vs Rf Graph



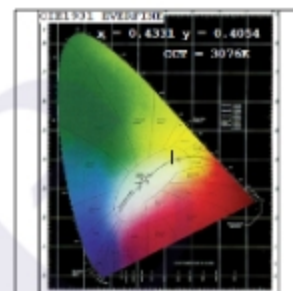
Color Vector Graph



Spectrum vs Wavelength Graph



CIE Chromaticity Graph



## Finish Options

### Body Finish

- Matt Black
- Matt Grey
- Custom RAL Color

## Dimming Options



Constant Current Driver  
20w 220-240V  
Non Dimmable



Constant Current Driver  
20w 220-240V  
Triac Dimmable



Constant Current Driver  
20w 220-240V  
Analog 0-10V / 1-10V Dimmable



Constant Current Driver  
20w 220-240V  
Dali Dimmable

L'azure constantly strives to improve our products using the latest technological advancements in the industry.  
Due to which the data mentioned in the data sheet is subject to change without prior notice.