

Shuays Surface S3 - #3057



9W



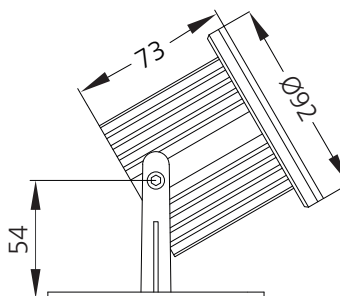
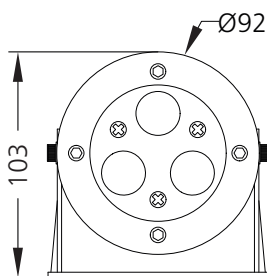
848lm



3000K



45°

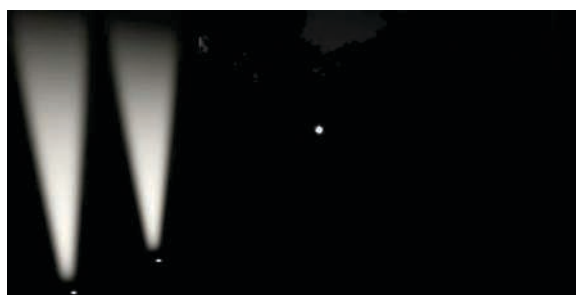
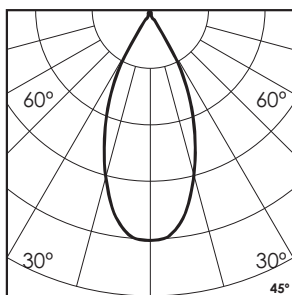


Note :
This Luminaire can not be operated
out of water for over 15 minutes.

Photometric Data

Light source	LED - High Power
Power (W)	9W
Delivered lumens	848lm
Source lumens	1008lm
Colour temperature (K)	3000K
Luminaire efficacy	94.26lm/W
Beam angle	45°
Cutoff angle	NA

Light output ratio	84%
Color rendering index (Ra)	>95
Color rendering index (R9)	>85
Binning MacAdam	<2 SDCM
LED life	L90 B10 Tj75°C
UGR	<19
Operating temperature	-20°C to +50°C
Light distribution	Direct - Symmetric



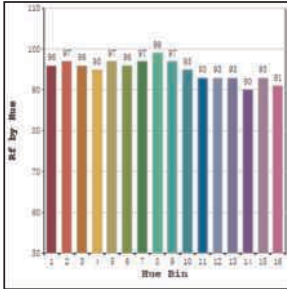
Technical Data

Mounting detail	Surface Underwater Light
Fixing detail	Mounting Clamp
Orientation	Adjustable
IP rating	IP68
IK rating	IK07
Heatsink material	SS
Ring material	SS

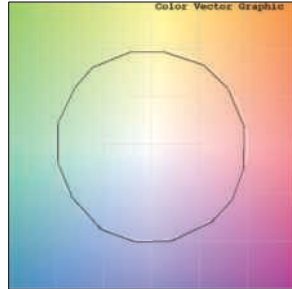
Glow wire test	850°
Product weight	1324gms
Safety class	III
Insulation class	III
Voltage	DC24V
Driver	Remote - DC24V

Photometric Graphs

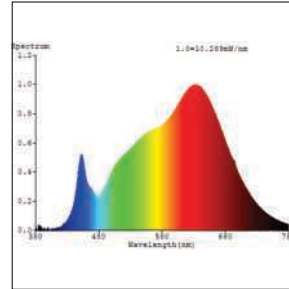
Hue Bin vs Rf Graph



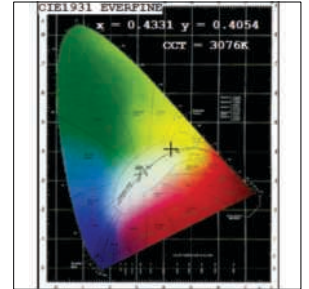
Color Vector Graph



Spectrum vs Wavelength Graph



CIE Chromaticity Graph



Finish Options

Trim Finish

- ☐ SS
- ☒ Custom RAL Color

Dimming Options



Constant Voltage Driver
75w DC24V
Non Dimmable



Constant Voltage Driver
75w DC24V
Triac Dimmable



Constant Voltage Driver
75w DC24V
Analog 0-10V / 1-10V Dimmable



Constant Voltage Driver
75w DC24V
Dali Dimmable

L'azure constantly strives to improve our products using the latest technological advancements in the industry.
Due to which the data mentioned in the data sheet is subject to change without prior notice.