

# Trinsic Disc M - #1496



18W



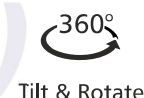
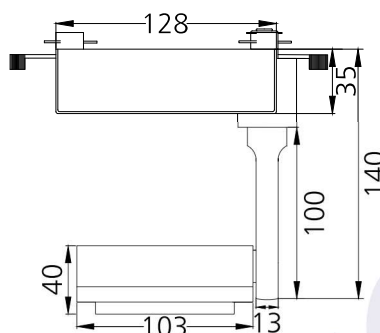
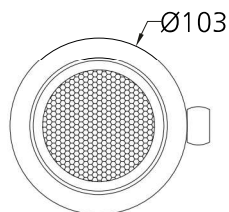
1575lm



4000K

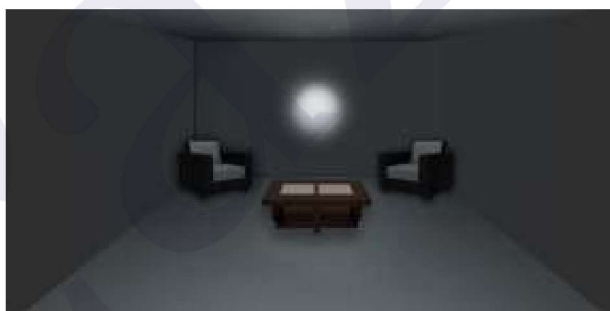
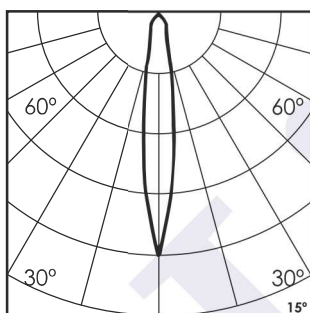


15°



## Photometric Data

Light source	LED - Array	Light output ratio	66%
Power (W)	18W	Color rendering index (Ra)	>95
Delivered lumens	1575lm	Color rendering index (R9)	>85
Source lumens	2376lm	Binning MacAdam	<2 SDCM
Colour temperature (K)	4000K	LED life	L90 B10 Tj75°C
Luminaire efficacy	87.5lm/W	UGR	<19
Beam angle	15°	Operating temperature	-20°C to +50°C
Cutoff angle	NA	Light distribution	Direct - Symmetric

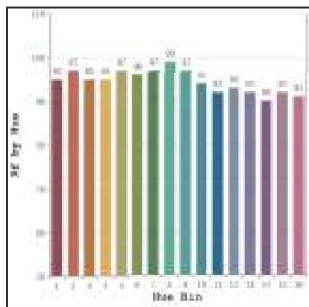


## Technical Data

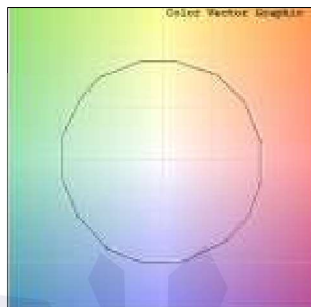
Mounting detail	Track Mounted	Product weight	468gms
Fixing detail	Track Channel	Safety class	III
Orientation	Adjustable	Insulation class	III
IP rating	IP20	LED current (mA)	450mA
Glow wire test	850°	Voltage	AC230V
Trim material	NA	Forward voltage	DC36V
Heatsink material	Diecast alm.	Driver	Driver Box

## Photometric Graphs

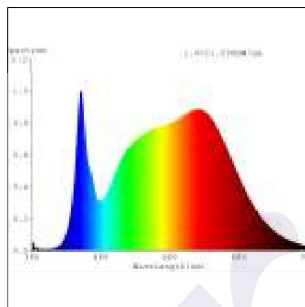
Hue Bin vs Rf Graph



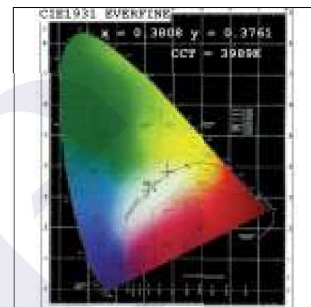
Color Vector Graph



Spectrum vs Wavelength Graph



CIE Chromaticity Graph



## Finish Options

### Body Finish

- Matt Black
- Custom RAL Color

## Filter Options



Honeycomb Filter

Above filters can be added to the fixture and need to be ordered as a separate accessory

## Dimming Options



Constant Current Driver  
18w 450mA 220-240V  
Non Dimmable



Constant Current Driver  
18w 450mA 220-240V  
Triac Dimmable



Constant Current Driver  
18w 450mA 220-240V  
Analog 0-10V / 1-10V Dimmable



Constant Current Driver  
18w 450mA 220-240V  
Dali Dimmable

L'azure constantly strives to improve our products using the latest technological advancements in the industry.  
Due to which the data mentioned in the data sheet is subject to change without prior notice.