

# Willow Point S - #3067



3W



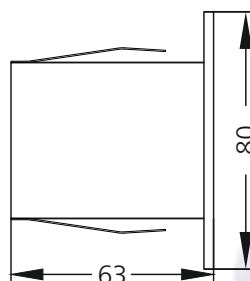
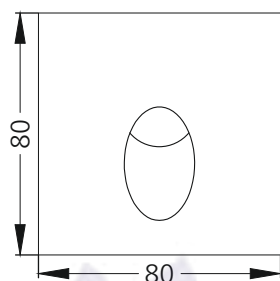
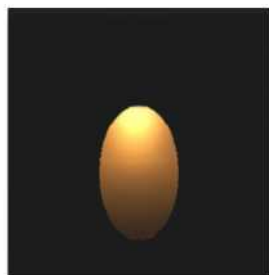
189lm



3000K



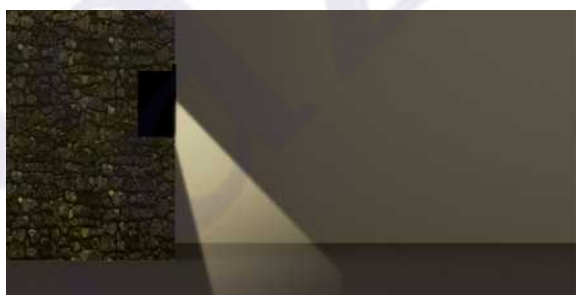
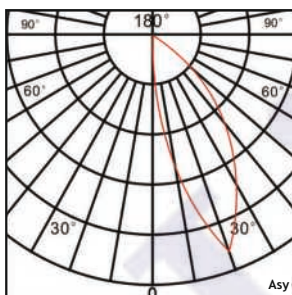
Asymmetric



## Photometric Data

Light source	LED - High Power
Power (W)	3W
Delivered lumens	189lm
Source lumens	336lm
Colour temperature (K)	3000K
Luminaire efficacy	63lm/W
Beam angle	Asymmetric
Cutoff angle	NA

Light output ratio	56%
Color rendering index (Ra)	>92
Color rendering index (R9)	>50
Binning MacAdam	<3 SDCM
LED life	L90 B10 Tj75°C
UGR	<19
Operating temperature	-20°C to +50°C
Light distribution	Asymmetric



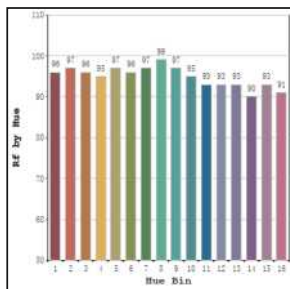
## Technical Data

Mounting detail	Recessed
Fixing detail	Wall Mounted
Orientation	Fixed
IP rating	IP54
Glow wire test	850°
Trim material	Diecast alm.
Heatsink material	Diecast alm.

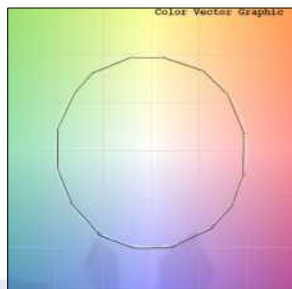
Product weight	131gms
Safety class	III
Insulation class	III
Voltage	AC230V / DC24V
Driver	Remote - AC230V
	Remote - DC24V

## Photometric Graphs

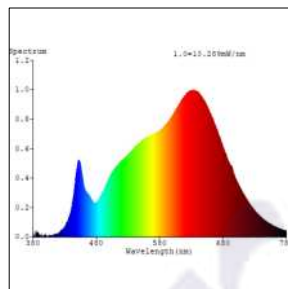
Hue Bin vs Rf Graph



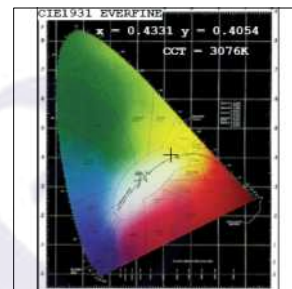
Color Vector Graph



Spectrum vs Wavelength Graph



CIE Chromaticity Graph



## Finish Options

### Body Finish

- ☐ Matt White
- ☒ Matt Black
- ☐ Custom RAL Color

## Dimming Options



Constant Voltage Driver  
36w DC24V  
Non Dimmable



Constant Voltage Driver  
36w DC24V  
Triac Dimmable



Constant Voltage Driver  
36w DC24V  
Analog 0-10V / 1-10V Dimmable



Constant Voltage Driver  
36w DC24V  
Dali Dimmable