

iSkew Niche Mini - #1304



1W



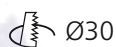
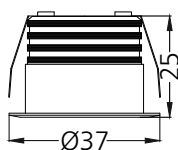
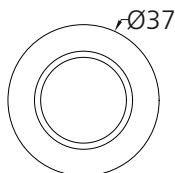
78lm



2700K

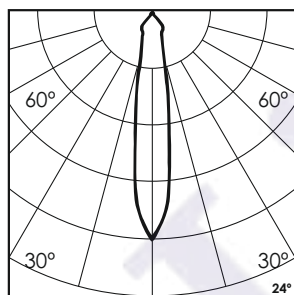


24°



Photometric Data

| | | | |
|------------------------|------------------|----------------------------|--------------------|
| Light source | LED - High Power | Light output ratio | 72% |
| Power (W) | 1W | Color rendering index (Ra) | > 92 |
| Delivered lumens | 78lm | Color rendering index (R9) | > 50 |
| Source lumens | 108lm | Binning MacAdam | < 3 SDCM |
| Colour temperature (K) | 2700K | LED life | L90 B10 Tj75°C |
| Luminaire efficacy | 78.31lm/W | UGR | < 19 |
| Beam angle | 24° | Operating temperature | -20°C to +50°C |
| Cutoff angle | NA | Light distribution | Direct - Symmetric |

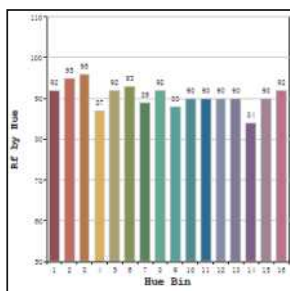


Technical Data

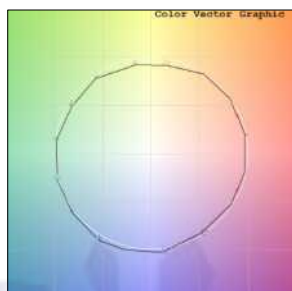
| | | | |
|-------------------|---------------------------|------------------|-------------|
| Mounting detail | Ceiling - Recessed 1-25mm | Product weight | 36gms |
| Fixing detail | Dual tension spring | Safety class | III |
| Orientation | Fixed | Insulation class | III |
| IP rating | IP20 | LED current (mA) | 300mA |
| Glow wire test | 850° | Voltage | AC230V |
| Trim material | Diecast alm. | Forward voltage | DC3V |
| Heatsink material | Diecast alm. | Driver | CC - Remote |

Photometric Graphs

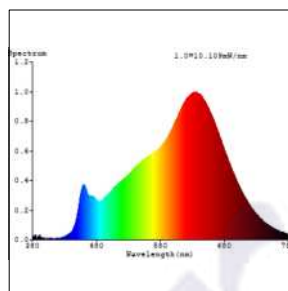
Hue Bin vs Rf Graph



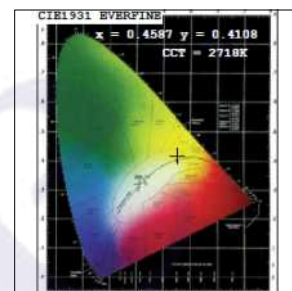
Color Vector Graph



Spectrum vs Wavelength Graph



CIE Chromaticity Graph



Finish Options

Trim Finish

- ☐ Matt White
- ☒ Matt Black
- ☐ Custom RAL Color

Interior Finish

- ☐ Matt White
- ☒ Matt Black

Dimming Options



Constant Current Driver
1w 300mA 220-240V
Non Dimmable



Constant Current Driver
1w 300mA 220-240V
Triac Dimmable



Constant Current Driver
1w 300mA 220-240V
Analog 0-10V / 1-10V Dimmable



Constant Current Driver
1w 300mA 220-240V
Dali Dimmable