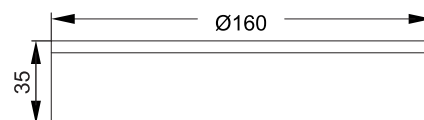
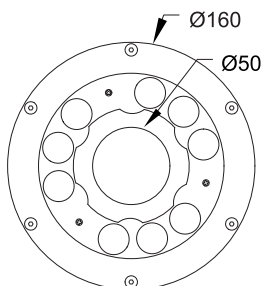


SHUYAS FOUNTAIN

#3060



Class III
220-240 V~50/60Hz

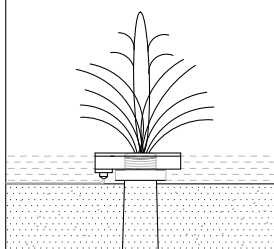
Power
18 Watts / 27 Watts

IP Rating
IP68

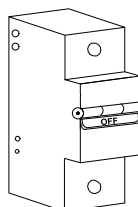
CAUTION - Must Be Installed By A Licensed Electrician Only.

1. Please read the instructions for the installation of fixture provided below. Warranty will be void unless followed.
2. The installation and operation of this fixture must be in accordance with the national safety regulations. L'azure is not liable when damage is caused due to improper installation.
3. Please read the detailed product specification sheet available at www.lazurelighting.com for any technical information regarding the fixture.
4. Over-voltage protection units should be installed in order to prevent electronic and electrical components from failing due to voltage spikes.

FOUNTAIN UNDERWATER LIGHT

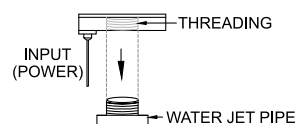


STEP 1



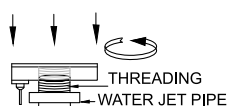
TURN OFF THE SWITCH AT THE MAIN ELECTRICAL PANEL

STEP 2



LOCATE THE WATER JET PIPE IN THE GROUND

STEP 3



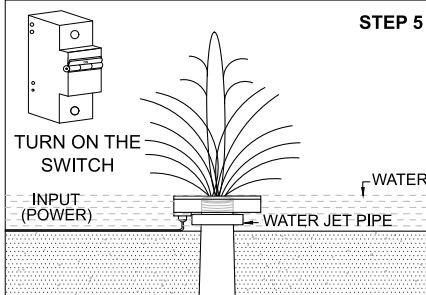
SECURE THE FIXTURE BY ROTATING IN ONTO THE PIPE

STEP 4



CONNECT THE FIXTURE TO REMOTE POWER SUPPLY

STEP 5



THE FIXTURE IS INSTALLED

Disclaimer : 1. Due to continuous product improvement the installation method is subject to change.
2. Images and procedures are for representation and reference purpose only.