

Allura Pinhole S - #1007



7W



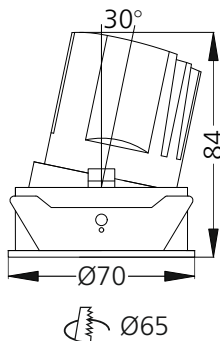
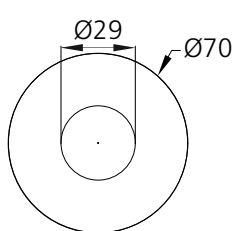
510lm



2700K



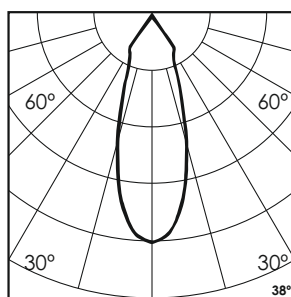
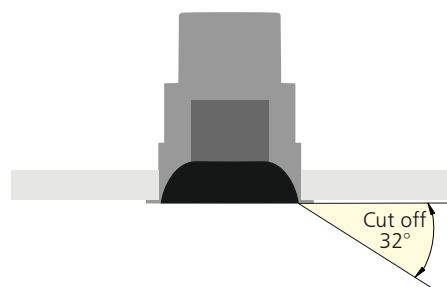
38°



Photometric Data

Light source	LED - Array
Power (W)	7W
Delivered lumens	510lm
Source lumens	812lm
Colour temperature (K)	2700K
Luminaire efficacy	72.98lm/W
Beam angle	38°
Cutoff angle	32°

Light output ratio	62%
Color rendering index (Ra)	>95
Color rendering index (R9)	>85
Binning MacAdam	<2 SDCM
LED life	L90 B10 Tj75°C
UGR	<19
Operating temperature	-20°C to +50°C
Light distribution	Direct - Symmetric



Technical Data

Mounting detail	Ceiling - Recessed 1-25mm
Fixing detail	Dual tension spring
Orientation	Adjustable
IP rating	IP44
Glow wire test	850°
Trim material	Diecast alm.
Heatsink material	Diecast alm.

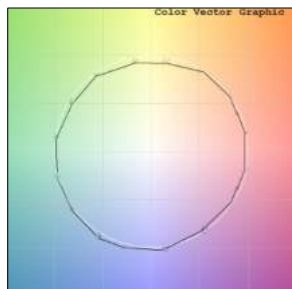
Product weight	156gms
Safety class	III
Insulation class	III
LED current (mA)	190mA
Voltage	AC230V
Forward voltage	DC36V
Driver	CC - Remote

Photometric Graphs

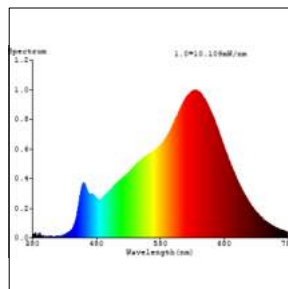
Hue Bin vs Rf Graph



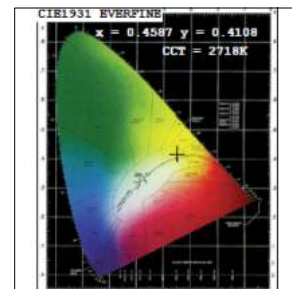
Color Vector Graph



Spectrum vs Wavelength Graph



CIE Chromaticity Graph



Finish Options

Trim Finish

- ☐ Matt White
- ☒ Matt Black
- ☐ Custom RAL Color

Interior Finish

- ☒ Matt Black

Filter Options



Honeycomb Filter



Diffusion Lens



Softening Lens

Above filters can be added to the fixture and need to be ordered as a separate accessory

Dimming Options



Constant Current Driver
7w 190mA 220-240V
Non Dimmable



Constant Current Driver
7w 190mA 220-240V
Triac Dimmable



Constant Current Driver
7w 190mA 220-240V
Analog 0-10V / 1-10V Dimmable



Constant Current Driver
7w 190mA 220-240V
Dali Dimmable



Constant Current Driver
7w 190mA 220-240V
Dali Tunable



Constant Current Driver
7w 190mA 220-240V
RF Tunable (operated with RF remote)

L'azure constantly strives to improve our products using the latest technological advancements in the industry.
Due to which the data mentioned in the data sheet is subject to change without prior notice.