

Aurele Inwards L - #1412



54W



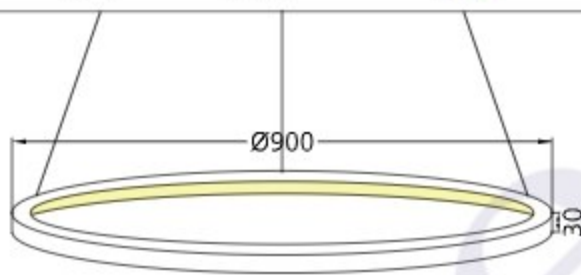
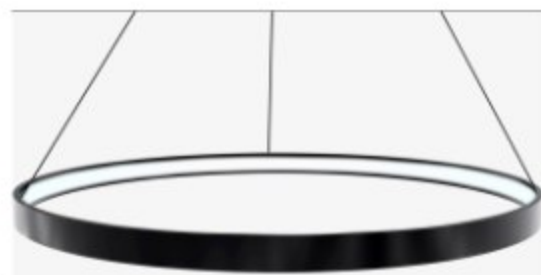
4210lm



2700K

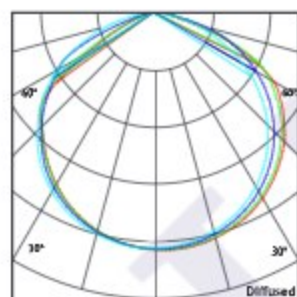


Diffused



Photometric Data

Light source	LED - Low Power	Light output ratio	61%
Power (W)	54W	Color rendering index (Ra)	>92
Delivered lumens	4210lm	Color rendering index (R9)	>50
Source lumens	6804lm	Binning MacAdam	<3 SDCM
Colour temperature (K)	2700K	LED life	L90 B10 Tj75°C
Luminaire efficacy	77.96lm/W	UGR	<19
Beam angle	Diffused	Operating temperature	-20°C to +50°C
Cutoff angle	NA	Light distribution	Direct - Diffused

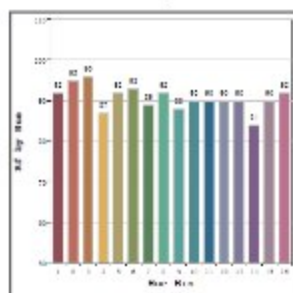


Technical Data

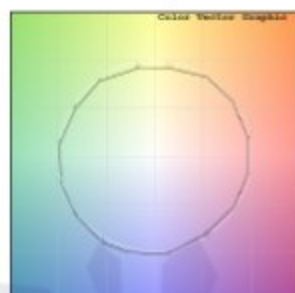
Mounting detail	Ceiling - Pendant	Product weight	604gms
Fixing detail	Hanging Wire	Safety class	III
Orientation	Fixed	Insulation class	III
IP rating	IP20	Voltage	AC230V
Glow wire test	850°	Forward voltage	DC24V
Trim material	Aluminium	Driver	CV - Remote
Heatsink material	Aluminium		

Photometric Graphs

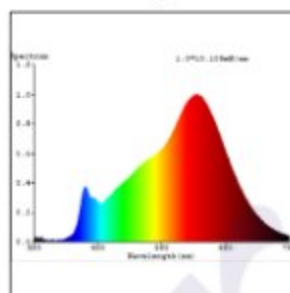
Hue Bin vs Rf Graph



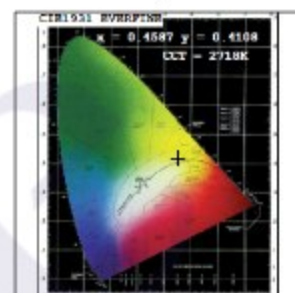
Color Vector Graph



Spectrum vs Wavelength Graph



CIE Chromaticity Graph



Finish Options

Trim Finish

- ☐ Matt White
- ☐ Matt Black
- ☒ Custom RAL Color

Interior Finish

NA

Dimming Options



Constant Voltage Driver
DC24V
Non Dimmable



Constant Voltage Driver
DC24V
Triac Dimmable



Constant Voltage Driver
DC24V
Analog 0-10V / 1-10V Dimmable



Constant Voltage Driver
DC24V
Dali Dimmable



Constant Voltage Driver
DC24V
Dali Tunable



Constant Voltage Driver
DC24V
RF Tunable (operated with RF remote)

L'azure constantly strives to improve our products using the latest technological advancements in the industry.
Due to which the data mentioned in the data sheet is subject to change without prior notice.