

Aurele Omni Horizontal - #2220



30W



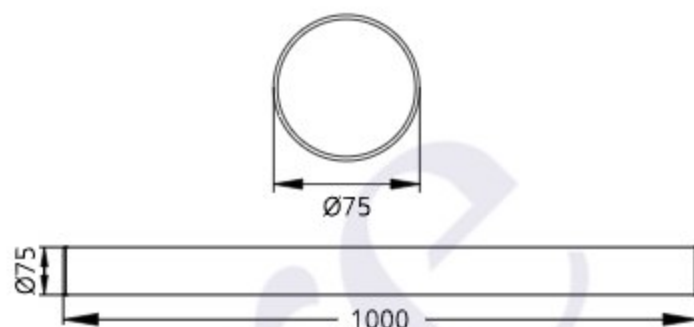
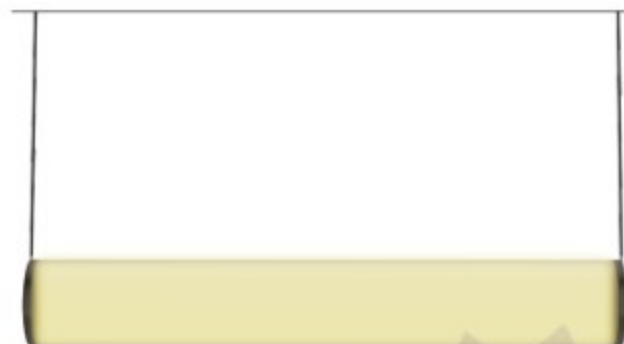
2535lm



2700K



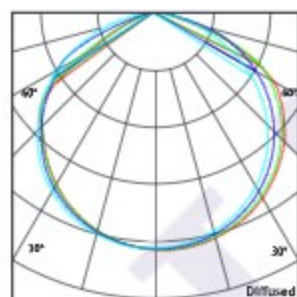
Diffused



Photometric Data

Light source	LED - Low Power
Power (W)	30W
Delivered lumens	2535lm
Source lumens	3780lm
Colour temperature (K)	2700K
Luminaire efficacy	84.5lm/W
Beam angle	Diffused
Cutoff angle	NA

Light output ratio	67%
Color rendering index (Ra)	>92
Color rendering index (R9)	>50
Binning MacAdam	<3 SDCM
LED life	L90 B10 Tj75°C
UGR	<19
Operating temperature	-20°C to +50°C
Light distribution	Direct - Diffused



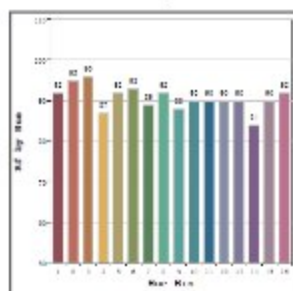
Technical Data

Mounting detail	Ceiling - Pendant
Fixing detail	Hanging Wire
Orientation	Fixed
IP rating	IP20
Glow wire test	850°
Heatsink material	Aluminium

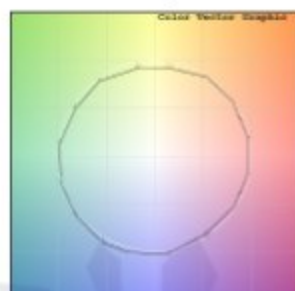
Product weight	1087gms
Safety class	III
Insulation class	III
Voltage	AC230V
Forward voltage	DC24V
Driver	CV - Remote

Photometric Graphs

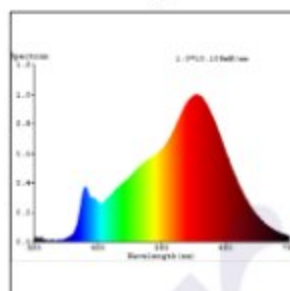
Hue Bin vs Rf Graph



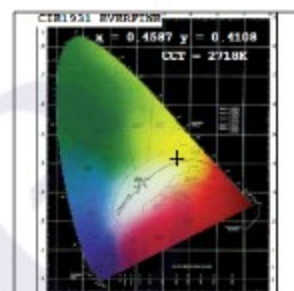
Color Vector Graph



Spectrum vs Wavelength Graph



CIE Chromaticity Graph



Finish Options

Trim Finish

- ☐ Matt White
- ☒ Matt Black
- ☐ Custom RAL Color

Max Length

3000MM

Standard Length

1000MM
2000MM
3000MM

Non-Standard lengths are possible on request

Dimming Options



Constant Voltage Driver
DC24V
Non Dimmable



Constant Voltage Driver
DC24V
Triac Dimmable



Constant Voltage Driver
DC24V
Analog 0-10V / 1-10V Dimmable



Constant Voltage Driver
DC24V
Dali Dimmable



Constant Voltage Driver
DC24V
Dali Tunable



Constant Voltage Driver
DC24V
RF Tunable (operated with RF remote)

L'azure constantly strives to improve our products using the latest technological advancements in the industry.
Due to which the data mentioned in the data sheet is subject to change without prior notice.