

Aurele Ring Surface XXL - #1497



90W



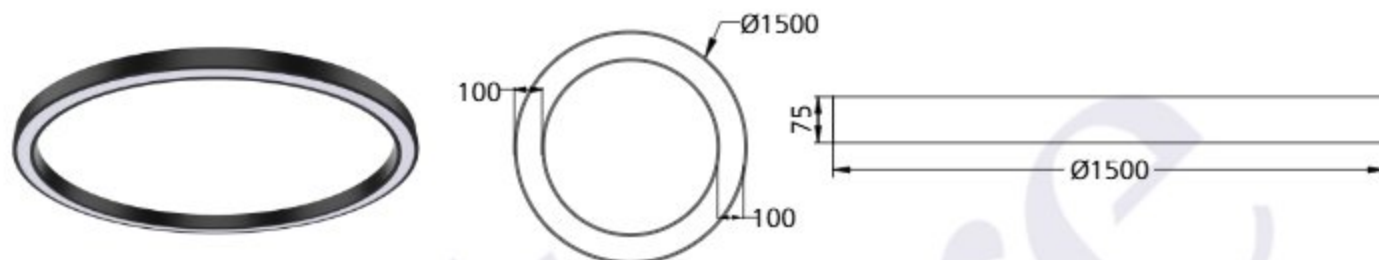
8075lm



4000K

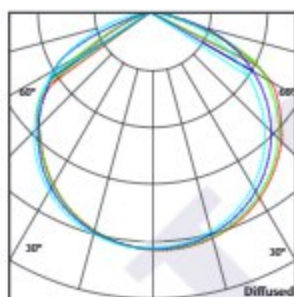


Diffused



Photometric Data

Light source	LED - Mid Power	Light output ratio	64%
Power (W)	90W	Color rendering index (Ra)	> 92
Delivered lumens	8075lm	Color rendering index (R9)	> 50
Source lumens	12510lm	Binning MacAdam	< 3 SDCM
Colour temperature (K)	4000K	LED life	L90 B10 Tj75°C
Luminaire efficacy	89.72lm/W	UGR	< 19
Beam angle	Diffused	Operating temperature	-20°C to + 50°C
Cutoff angle	NA	Light distribution	Direct - Diffused

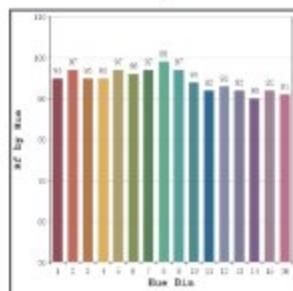


Technical Data

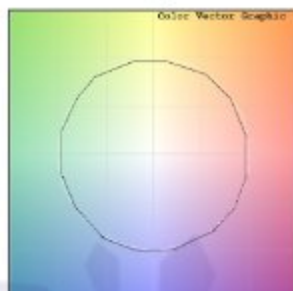
Mounting detail	Ceiling - Surface	Product weight	4000gms
Fixing detail	Mounting with Screw	Safety class	III
Orientation	Fixed	Insulation class	III
IP rating	IP20	LED current (mA)	1250mA
Glow wire test	850°	Voltage	AC230V
Trim material	NA	Forward voltage	DC60V
Heatsink material	Aluminium	Driver	CC - Remote

Photometric Graphs

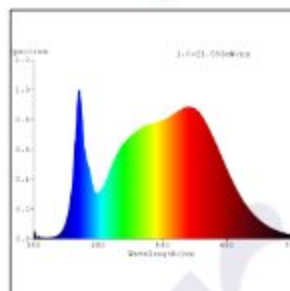
Hue Bin vs Rf Graph



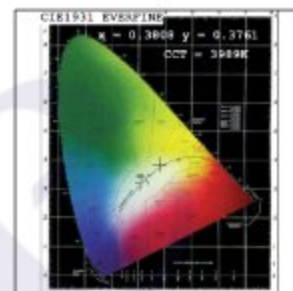
Color Vector Graph



Spectrum vs Wavelength Graph



CIE Chromaticity Graph



Finish Options

Trim Finish

- ☐ Matt White
- ☒ Matt Black
- ☐ Custom RAL Color

Body Finish

- ☐ Matt White
- ☒ Matt Black

Dimming Options



Constant Current Driver
90w 1250mA 220-240V
Non Dimmable



Constant Current Driver
90w 1250mA 220-240V
Triac Dimmable



Constant Current Driver
90w 1250mA 220-240V
Analog 0-10V / 1-10V Dimmable



Constant Current Driver
90w 1250mA 220-240V
Dali Dimmable

L'azure constantly strives to improve our products using the latest technological advancements in the industry.
Due to which the data mentioned in the data sheet is subject to change without prior notice.