

Side Bend M-IP67 - #2178



10W/M



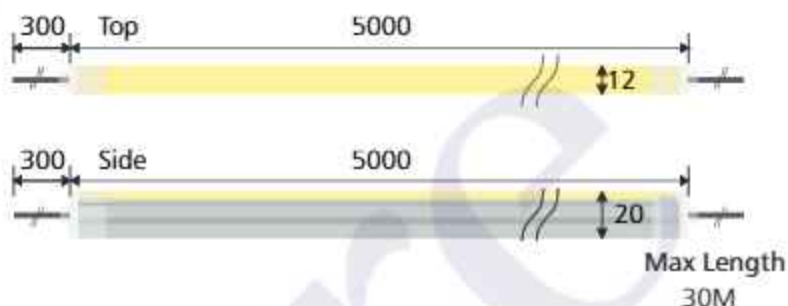
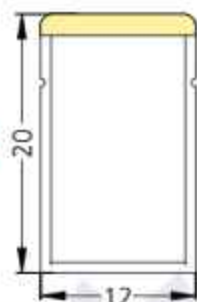
720lm/m to 860lm/m



2700K to 6500K

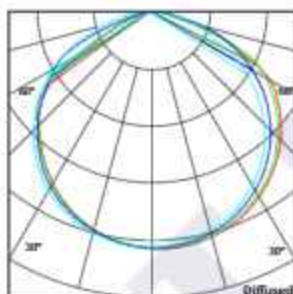


Diffused



Photometric Data

Light source	LED - Low Power	Light output ratio	57%
Power (W)	10W/M	Color rendering index (Ra)	> 92
Delivered lumens	720lm/m to 860lm/m	Color rendering index (R9)	> 50
Source lumens	1260lm/m to 1490lm/m	Binning MacAdam	< 3 SDCM
Colour temperature (K)	2700K to 6500K	LED life	L90 B10 Tj75°C
Luminaire efficacy	72lm/W to 86lm/W	Operating temperature	-20°C to +50°C
Beam angle	Diffused	Light distribution	Direct - Diffused

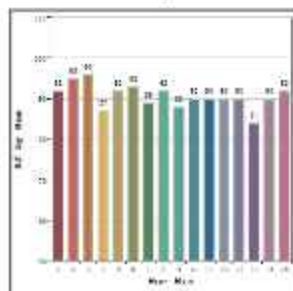


Technical Data

Mounting detail	Profile or Clamp Mounted	Safety class	III
Fixing detail	Screw Mounting	Insulation class	III
Orientation	Fixed	Driver Input Voltage	AC230V
IP rating	IP67	Flexum voltage	DC24V
Glow wire test	850°	Driver	CV - Remote

Photometric Graphs

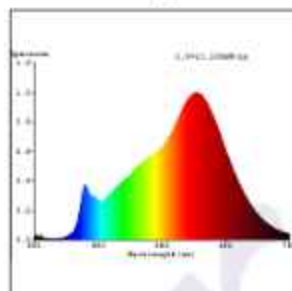
Hue Bin vs Rf Graph



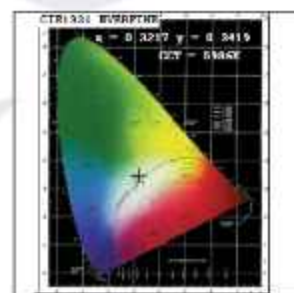
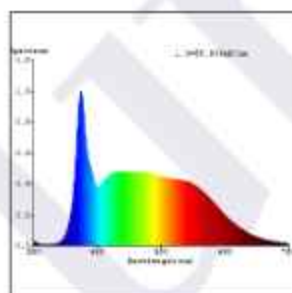
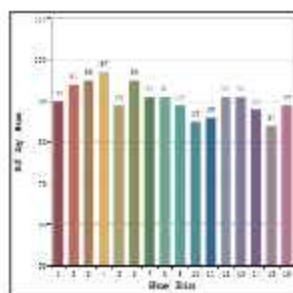
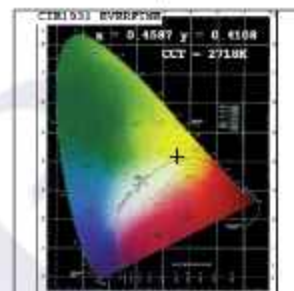
Color Vector Graph



Spectrum vs Wavelength Graph



CIE Chromaticity Graph



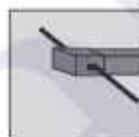
Accessories Options



Side Bend
Radius 300mm



Front
Cable Entry

Side
Cable Entry

Bottom
Cable Entry



Mounting Chain



Mounting
Clamp



Mounting Profile

Dimming Options



Constant Voltage Driver
75w DC24V
Dali Tunable



L'azure Exclusive 30 Meter Single length.

Lazure constantly strives to improve our products using the latest technological advancements in the industry.
Due to which the data mentioned in the data sheet is subject to change without prior notice.