

Top Bend M - IP67 - #2193



6W/M



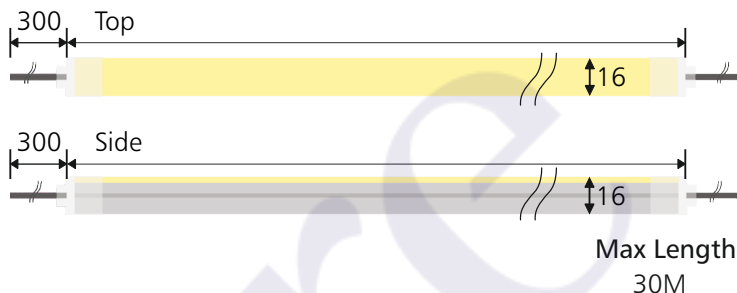
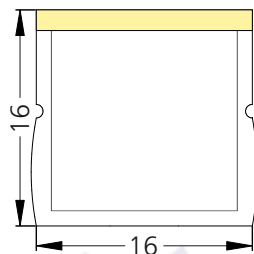
475lm/m



3000K



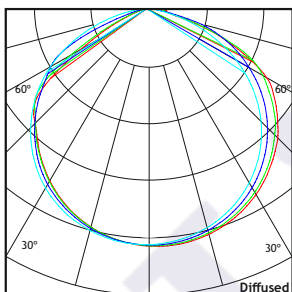
Diffused



Photometric Data

Light source	LED - Low Power
Power (W)	6W/M
Delivered lumens	475lm/m
Source lumens	786lm/m
Colour temperature (K)	3000K
Luminaire efficacy	79.16lm/W
Beam angle	Diffused

Light output ratio	60%
Color rendering index (Ra)	> 92
Color rendering index (R9)	> 50
Binning MacAdam	< 3 SDCM
LED life	L90 B10 Tj75°C
Operating temperature	-20°C to +50°C
Light distribution	Direct - Diffused



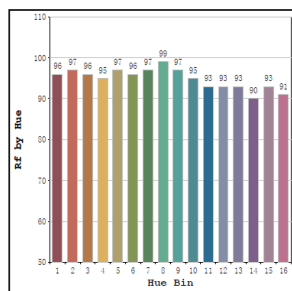
Technical Data

Mounting detail	Profile or Clamp Mounted
Fixing detail	Screw Mounting
Orientation	Fixed
IP rating	IP67
Glow wire test	850°

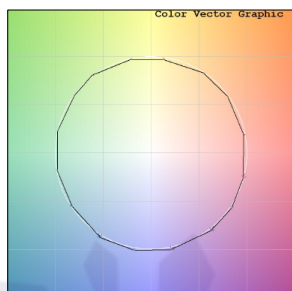
Safety class	III
Insulation class	III
Driver Input Voltage	AC230V
Flexum voltage	DC48V
Driver	CV - Remote

Photometric Graphs

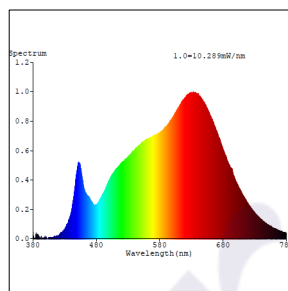
Hue Bin vs Rf Graph



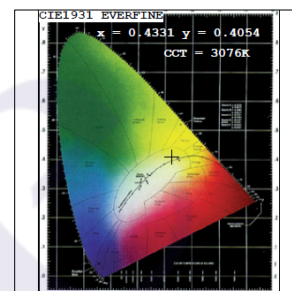
Color Vector Graph



Spectrum vs Wavelength Graph



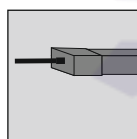
CIE Chromaticity Graph



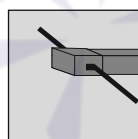
Accessories Options



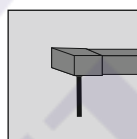
Top Bend
Radius 300mm



Front
Cable Entry



Side
Cable Entry



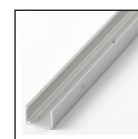
Bottom
Cable Entry



Mounting
Chain



Mounting
Clamp



Mounting
Profile

Dimming Options



Constant Voltage Driver
75w DC48V
Non Dimmable



Constant Voltage Driver
75w DC48V
Triac Dimmable



Constant Voltage Driver
75w DC48V
Analog 0-10V / 1-10V Dimmable



Constant Voltage Driver
75w DC48V
Dali Dimmable



L'azure Exclusive 30 Meter Single length.

L'azure constantly strives to improve our products using the latest technological advancements in the industry.
Due to which the data mentioned in the data sheet is subject to change without prior notice.