

Hyeya Basix 2x2 - #1484



45W



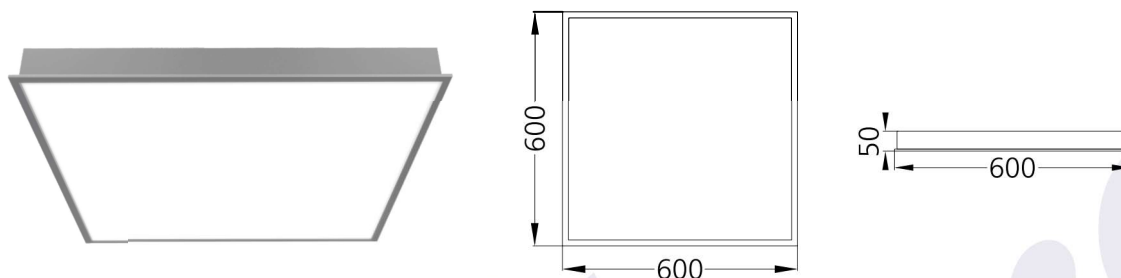
4630lm



6000K

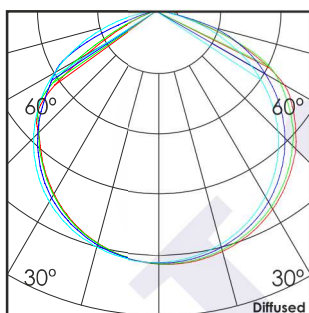


Diffused



Photometric Data

Light source	LED - Array	Light output ratio	68%
Power (W)	45W	Color rendering index (Ra)	>92
Delivered lumens	4630lm	Color rendering index (R9)	>50
Source lumens	6795lm	Binning MacAdam	<3 SDCM
Colour temperature (K)	6000K	LED life	L90 B10 Tj75°C
Luminaire efficacy	102.88lm/W	UGR	<19
Beam angle	Diffused	Operating temperature	-20°C to +50°C
Cutoff angle	NA	Light distribution	Direct - Diffused

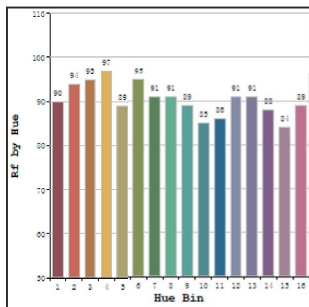


Technical Data

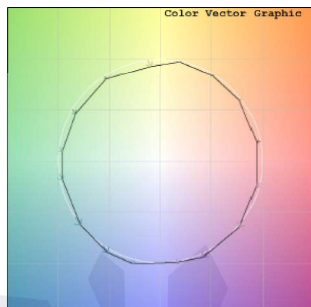
Mounting detail	Ceiling - Recessed 1-25mm	Product weight	1441gms
Fixing detail	Dual tension spring	Safety class	III
Orientation	Fixed	Insulation class	III
IP rating	IP44	LED current (mA)	300mA
Glow wire test	850°	Voltage	AC230V
Trim material	Diecast alm.	Forward voltage	DC150V
Heatsink material	Diecast alm.	Driver	CC - Remote

Photometric Graphs

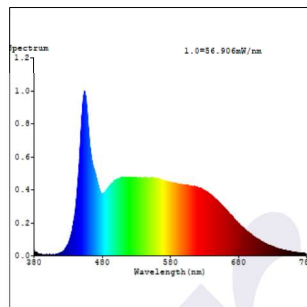
Hue Bin vs Rf Graph



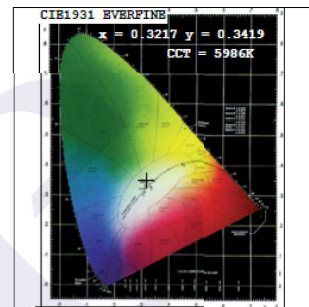
Color Vector Graph



Spectrum vs Wavelength Graph



CIE Chromaticity Graph



Finish Options

Trim Finish

- ☐ Matt White
- ☒ Custom RAL Color

Dimming Options



Constant Current Driver
45w 300mA 220-240V
Non Dimmable



Constant Current Driver
45w 300mA 220-240V
Triac Dimmable



Constant Current Driver
45w 300mA 220-240V
Analog 0-10V / 1-10V Dimmable



Constant Current Driver
45w 300mA 220-240V
Dali Dimmable