

# Basix - Deep Round M - #1487



16W



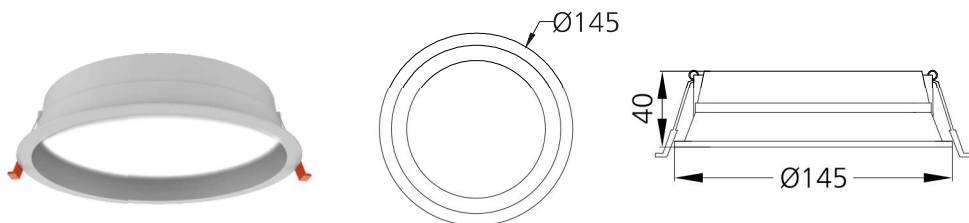
1480lm



3000K

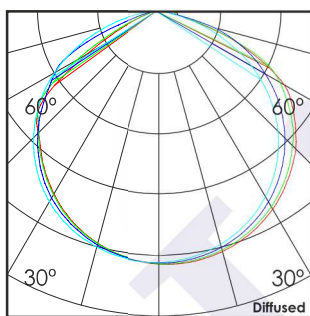


Diffused



## Photometric Data

Light source	LED - Array	Light output ratio	70%
Power (W)	16W	Color rendering index (Ra)	>92
Delivered lumens	1480lm	Color rendering index (R9)	>50
Source lumens	2096lm	Binning MacAdam	<3 SDCM
Colour temperature (K)	3000K	LED life	L90 B10 Tj75°C
Luminaire efficacy	92.5lm/W	UGR	<19
Beam angle	Diffused	Operating temperature	-20°C to +50°C
Cutoff angle	NA	Light distribution	Direct - Diffused

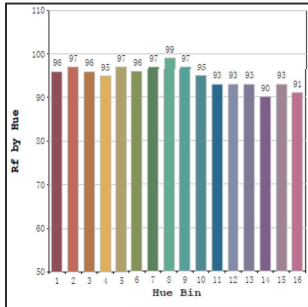


## Technical Data

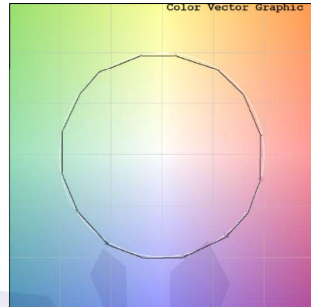
Mounting detail	Ceiling - Recessed 1-25mm	Product weight	108gms
Fixing detail	Dual tension spring	Safety class	III
Orientation	Fixed	Insulation class	III
IP rating	IP44	LED current (mA)	300mA
Glow wire test	850°	Voltage	AC230V
Trim material	Diecast alm.	Forward voltage	DC54V
Heatsink material	Diecast alm.	Driver	CC - Remote

## Photometric Graphs

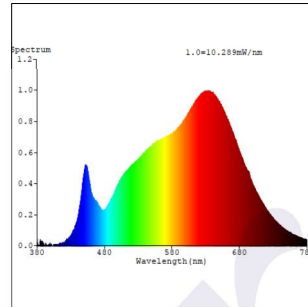
Hue Bin vs Rf Graph



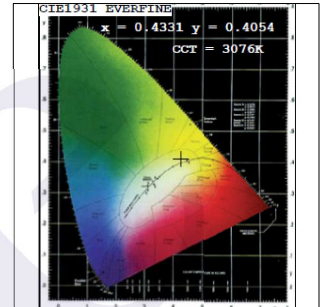
Color Vector Graph



Spectrum vs Wavelength Graph



CIE Chromaticity Graph



## Finish Options

### Trim Finish

- ☐ Matt White  
☒ Custom RAL Color

### Interior Finish

- ☐ Matt White

## Dimming Options



Constant Current Driver  
16w 300mA 220-240V  
Non Dimmable



Constant Current Driver  
16w 300mA 220-240V  
Triac Dimmable



Constant Current Driver  
16w 300mA 220-240V  
Analog 0-10V / 1-10V Dimmable



Constant Current Driver  
16w 300mA 220-240V  
Dali Dimmable

L'azure constantly strives to improve our products using the latest technological advancements in the industry.  
Due to which the data mentioned in the data sheet is subject to change without prior notice.