

Basix - Deep Round XL - #1489



32W



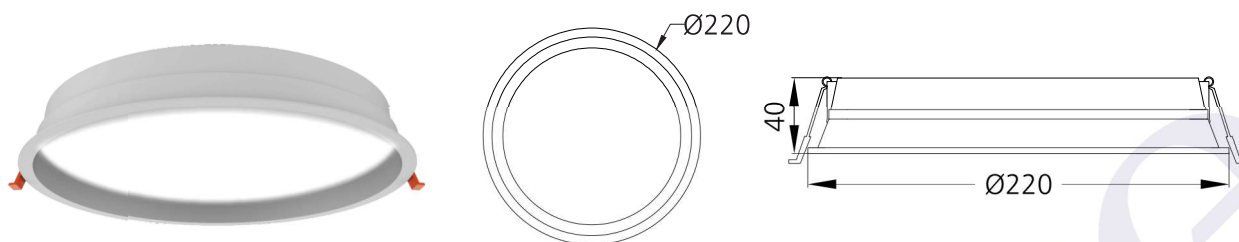
3070lm



4000K

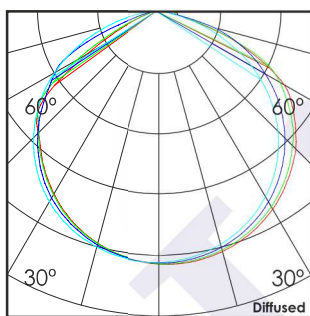


Diffused



Photometric Data

Light source	LED - Array	Light output ratio	69%
Power (W)	32W	Color rendering index (Ra)	>92
Delivered lumens	3070lm	Color rendering index (R9)	>50
Source lumens	4448lm	Binning MacAdam	<3 SDCM
Colour temperature (K)	4000K	LED life	L90 B10 Tj75°C
Luminaire efficacy	95.93lm/W	UGR	<19
Beam angle	Diffused	Operating temperature	-20°C to +50°C
Cutoff angle	NA	Light distribution	Direct - Diffused

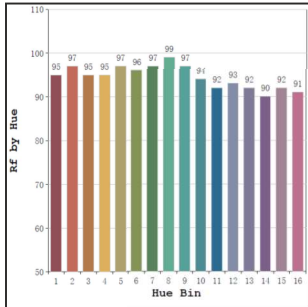


Technical Data

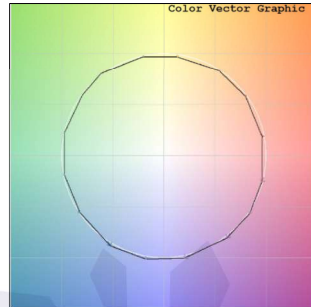
Mounting detail	Ceiling - Recessed 1-25mm	Product weight	233gms
Fixing detail	Dual tension spring	Safety class	III
Orientation	Fixed	Insulation class	III
IP rating	IP44	LED current (mA)	300mA
Glow wire test	850°	Voltage	AC230V
Trim material	Diecast alm.	Forward voltage	DC107V
Heatsink material	Diecast alm.	Driver	CC - Remote

Photometric Graphs

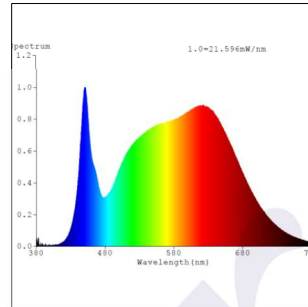
Hue Bin vs Rf Graph



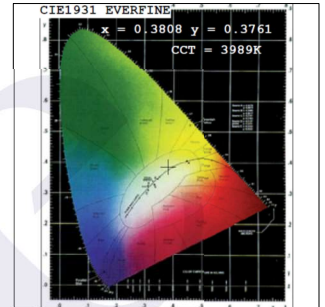
Color Vector Graph



Spectrum vs Wavelength Graph



CIE Chromaticity Graph



Finish Options

Trim Finish

- ☐ Matt White
- ☒ Custom RAL Color

Interior Finish

- ☐ Matt White

Dimming Options



Constant Current Driver
32w 300mA 220-240V
Non Dimmable



Constant Current Driver
32w 300mA 220-240V
Triac Dimmable



Constant Current Driver
32w 300mA 220-240V
Analog 0-10V / 1-10V Dimmable



Constant Current Driver
32w 300mA 220-240V
Dali Dimmable

L'azure constantly strives to improve our products using the latest technological advancements in the industry.
Due to which the data mentioned in the data sheet is subject to change without prior notice.