

# Hyeya Flat S - #1337



8W



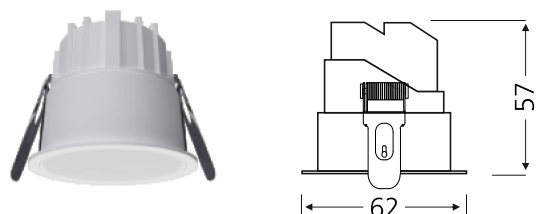
760lm



2700K

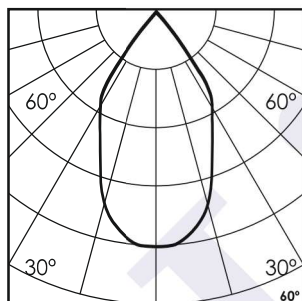


60°



## Photometric Data

Light source	LED - Array	Light output ratio	69%
Power (W)	8W	Color rendering index (Ra)	>95
Delivered lumens	760lm	Color rendering index (R9)	>85
Source lumens	1031lm	Binning MacAdam	<2 SDCM
Colour temperature (K)	2700K	LED life	L90 B10 Tj75°C
Luminaire efficacy	95lm/W	UGR	<19
Beam angle	60°	Operating temperature	-20°C to +50°C
Cutoff angle	NA	Light distribution	Direct - Symmetric

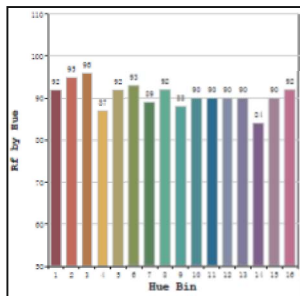


## Technical Data

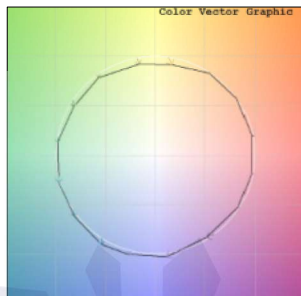
Mounting detail	Ceiling - Recessed	Product weight	262gms
Fixing detail	Dual tension spring	Safety class	III
Orientation	Fixed	Insulation class	III
IP rating	IP44	LED current (mA)	250mA
Glow wire test	850°	Voltage	AC230V
Trim material	Diecast alm.	Forward voltage	DC36V
Heatsink material	Diecast alm.	Driver	Remote

## Photometric Graphs

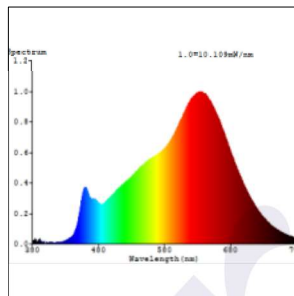
Hue Bin vs Rf Graph



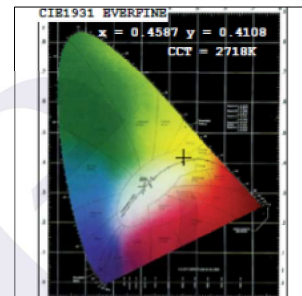
Color Vector Graph



Spectrum vs Wavelength Graph



CIE Chromaticity Graph



## Finish Options

### Body Finish

- ☐ Matt White
- ☒ Matt Black
- ☐ Custom RAL Color

### Reflector Finish

- ☐ Matt White
- ☒ Matt Black
- ☐ Specular
- ☐ Pearl Black
- ☐ Matt Silver
- ☐ Matt Gold

## Dimming Options



Constant Current Driver  
8w 250mA 220-240V  
Non Dimmable



Constant Current Driver  
8w 250mA 220-240V  
Triac Dimmable



Constant Current Driver  
8w 250mA 220-240V  
Analog 0-10V / 1-10V Dimmable



Constant Current Driver  
8w 250mA 220-240V  
Dali Dimmable

L'azure constantly strives to improve our products using the latest technological advancements in the industry.  
Due to which the data mentioned in the data sheet is subject to change without prior notice.