

# Hypogean Fix Rc3 - #3038



3W



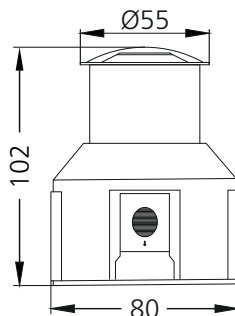
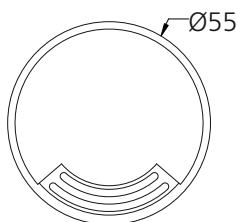
129lm



3000K

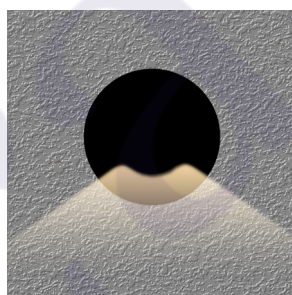
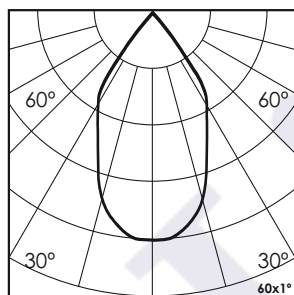


60x1°



## Photometric Data

Light source	LED - High Power	Light output ratio	38%
Power (W)	3W	Color rendering index (Ra)	> 92
Delivered lumens	129lm	Color rendering index (R9)	> 50
Source lumens	336lm	Binning MacAdam	< 3 SDCM
Colour temperature (K)	3000K	LED life	L90 B10 Tj75°C
Luminaire efficacy	43lm/W	UGR	< 19
Beam angle	60x1°	Operating temperature	-20°C to +50°C
Cutoff angle	NA	Light distribution	Indirect - Symmetric

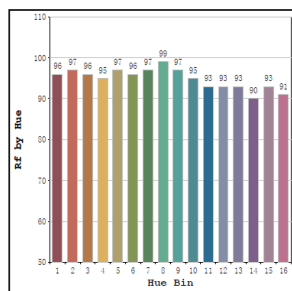


## Technical Data

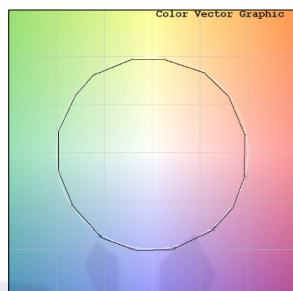
Mounting detail	Inground Light	Glow wire test	850°
Fixing detail	Backbox	Product weight	352gms
Orientation	Fixed	Safety class	III
IP rating	IP67	Insulation class	III
IK rating	IK08	Voltage	AC230V / DC24V
Heatsink material	Diecast alm.	Driver	In-built - AC230V
Ring material	SS		Remote - DC24V

## Photometric Graphs

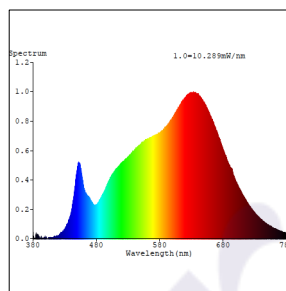
Hue Bin vs Rf Graph



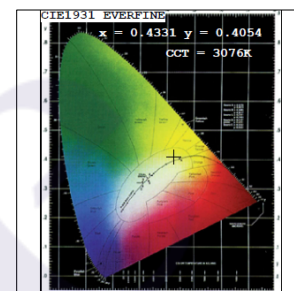
Color Vector Graph



Spectrum vs Wavelength Graph



CIE Chromaticity Graph



## Finish Options

### Trim Finish

- ☐ SS
- ☒ Custom RAL Color

## Dimming Options



Constant Voltage Driver  
75w DC24V  
Non Dimmable



Constant Voltage Driver  
75w DC24V  
Triac Dimmable



Constant Voltage Driver  
75w DC24V  
Analog 0-10V / 1-10V Dimmable



Constant Voltage Driver  
75w DC24V  
Dali Dimmable

In-built Driver placement is only possible for the Non Dimmable Driver option.