

# Hypogean Tilt RA-3 - #3042



9W



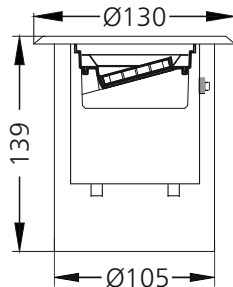
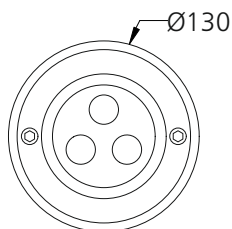
773lm



2700K



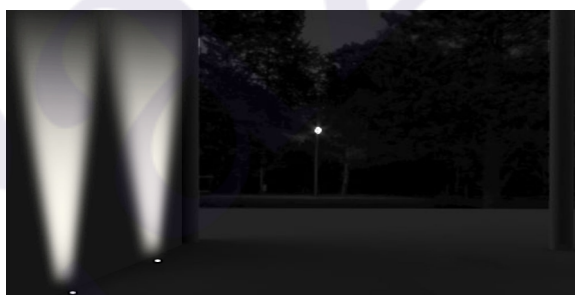
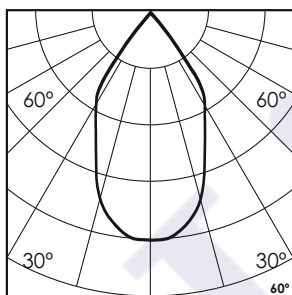
60°



## Photometric Data

Light source	LED - High Power
Power (W)	9W
Delivered lumens	773lm
Source lumens	972lm
Colour temperature (K)	2700K
Luminaire efficacy	85.93lm/W
Beam angle	60°
Cutoff angle	NA

Light output ratio	79%
Color rendering index (Ra)	> 92
Color rendering index (R9)	> 50
Binning MacAdam	< 3 SDCM
LED life	L90 B10 Tj75°C
UGR	< 19
Operating temperature	-20°C to +50°C
Light distribution	Direct - Symmetric



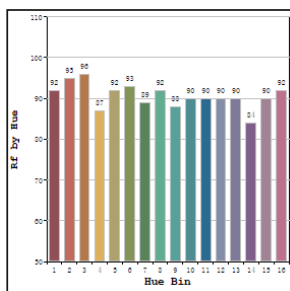
## Technical Data

Mounting detail	Inground Light
Fixing detail	Backbox
Orientation	Adjustable
IP rating	IP67
IK rating	IK08
Heatsink material	Diecast alm.
Ring material	SS

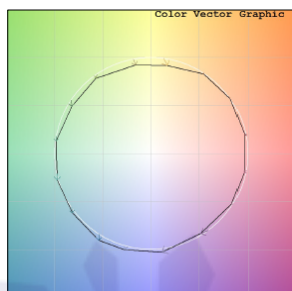
Glow wire test	850°
Product weight	1121gms
Safety class	III
Insulation class	III
Voltage	AC230V / DC24V
Driver	In-built - AC230V
	Remote - DC24V

## Photometric Graphs

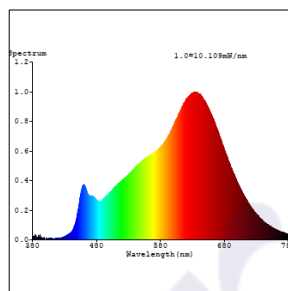
Hue Bin vs Rf Graph



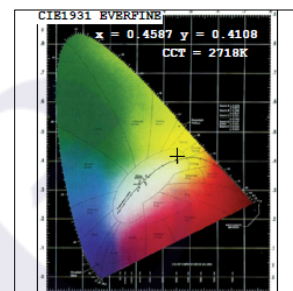
Color Vector Graph



Spectrum vs Wavelength Graph



CIE Chromaticity Graph



## Finish Options

### Trim Finish

- ☐ SS
- ☒ Custom RAL Color

## Filter Options



Honeycomb Filter

Above filters can be added to the fixture and need to be ordered as a separate accessory

## Dimming Options



Constant Voltage Driver  
75w DC24V  
Non Dimmable



Constant Voltage Driver  
75w DC24V  
Triac Dimmable



Constant Voltage Driver  
75w DC24V  
Analog 0-10V / 1-10V Dimmable



Constant Voltage Driver  
75w DC24V  
Dali Dimmable

In-built Driver placement is only possible for the Non Dimmable Driver option.

L'azure constantly strives to improve our products using the latest technological advancements in the industry.  
Due to which the data mentioned in the data sheet is subject to change without prior notice.