

Hypogean Tilt RA-3 - #3042



9W



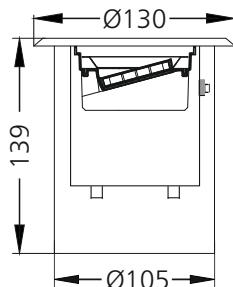
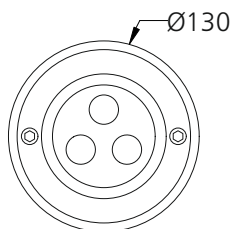
793lm



3000K

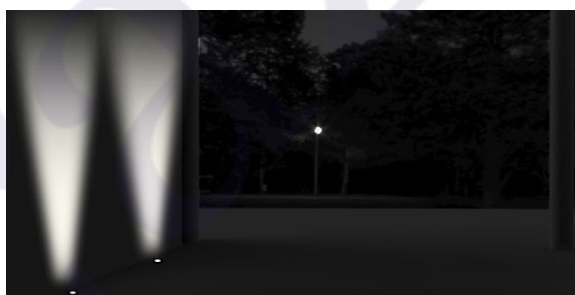
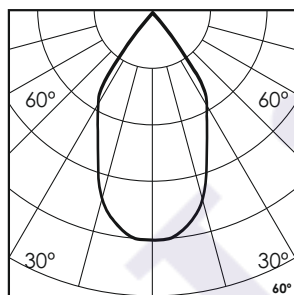


60°



Photometric Data

Light source	LED - High Power	Light output ratio	78%
Power (W)	9W	Color rendering index (Ra)	> 92
Delivered lumens	793lm	Color rendering index (R9)	> 50
Source lumens	1008lm	Binning MacAdam	< 3 SDCM
Colour temperature (K)	3000K	LED life	L90 B10 Tj75°C
Luminaire efficacy	88.15lm/W	UGR	< 19
Beam angle	60°	Operating temperature	-20°C to +50°C
Cutoff angle	NA	Light distribution	Direct - Symmetric

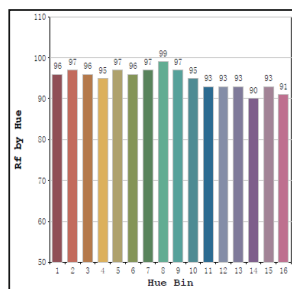


Technical Data

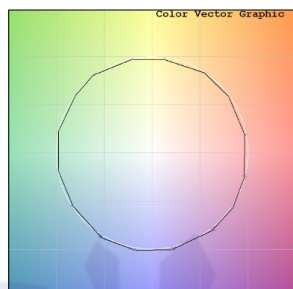
Mounting detail	Inground Light	Glow wire test	850°
Fixing detail	Backbox	Product weight	1121gms
Orientation	Adjustable	Safety class	III
IP rating	IP67	Insulation class	III
IK rating	IK08	Voltage	AC230V / DC24V
Heatsink material	Diecast alm.	Driver	In-built - AC230V
Ring material	SS		Remote - DC24V

Photometric Graphs

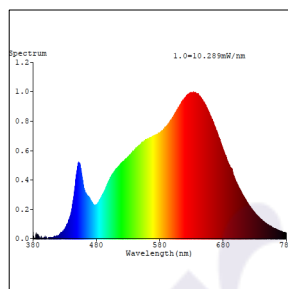
Hue Bin vs Rf Graph



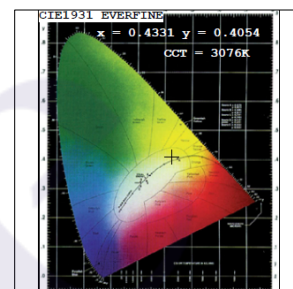
Color Vector Graph



Spectrum vs Wavelength Graph



CIE Chromaticity Graph



Finish Options

Trim Finish

- ☐ SS
- ☒ Custom RAL Color

Filter Options



Honeycomb Filter

Above filters can be added to the fixture and need to be ordered as a separate accessory

Dimming Options



Constant Voltage Driver
75w DC24V
Non Dimmable



Constant Voltage Driver
75w DC24V
Triac Dimmable



Constant Voltage Driver
75w DC24V
Analog 0-10V / 1-10V Dimmable



Constant Voltage Driver
75w DC24V
Dali Dimmable

In-built Driver placement is only possible for the Non Dimmable Driver option.

L'azure constantly strives to improve our products using the latest technological advancements in the industry.
Due to which the data mentioned in the data sheet is subject to change without prior notice.