

Marcopia Round 6 - #3019



25W



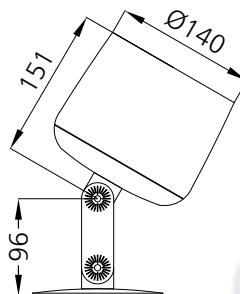
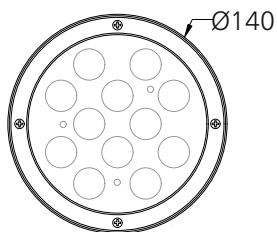
2030lm



3000K



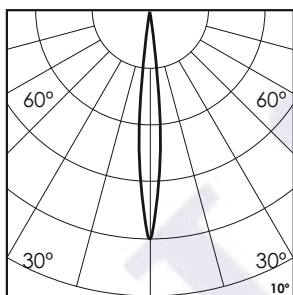
10°



Photometric Data

Light source	LED - High Power
Power (W)	25W
Delivered lumens	2030lm
Source lumens	2800lm
Colour temperature (K)	3000K
Luminaire efficacy	81.2lm/W
Beam angle	10°
Cutoff angle	NA

Light output ratio	72%
Color rendering index (Ra)	> 92
Color rendering index (R9)	> 50
Binning MacAdam	< 3 SDCM
LED life	L90 B10 Tj75°C
UGR	< 19
Operating temperature	-20°C to +50°C
Light distribution	Direct - Symmetric



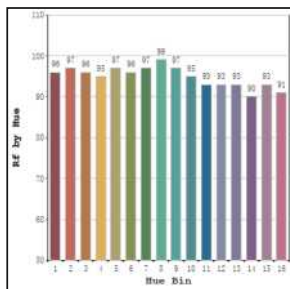
Technical Data

Mounting detail	Surface Uplichter
Fixing detail	Cowl / Tree Strap / Pole Bracket / Mounting Plate
Orientation	Adjustable
IP rating	IP65
IK rating	IK05
Glow wire test	850°

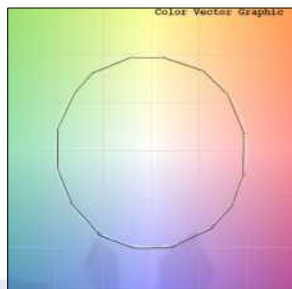
Heatsink material	Diecast alm.
Product weight	2544gms
Safety class	III
Insulation class	III
Voltage	AC230V / DC24V
Driver	In-built - AC230V Remote - DC24V

Photometric Graphs

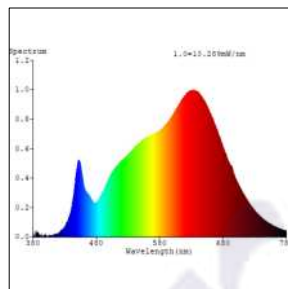
Hue Bin vs Rf Graph



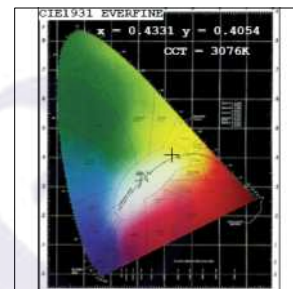
Color Vector Graph



Spectrum vs Wavelength Graph



CIE Chromaticity Graph



Finish Options

Body Finish

- ☐ Matt Grey
- ☒ Custom RAL Color

Filter Options



Honeycomb Filter

Above filters can be added to the fixture and need to be ordered as a separate accessory

Accessories Options



Cowl



Tree Strap



Pole Bracket

Above accessories can be added to the fixture and need to be ordered as a separate accessory

Dimming Options



Constant Voltage Driver
75w DC24V
Non Dimmable



Constant Voltage Driver
75w DC24V
Triac Dimmable



Constant Voltage Driver
75w DC24V
Analog 0-10V / 1-10V Dimmable



Constant Voltage Driver
75w DC24V
Dali Dimmable

L'azure constantly strives to improve our products using the latest technological advancements in the industry.
Due to which the data mentioned in the data sheet is subject to change without prior notice.