

# Marcopia Square 3 - #3006



9W



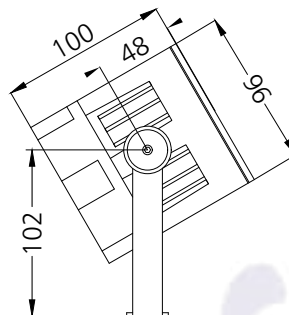
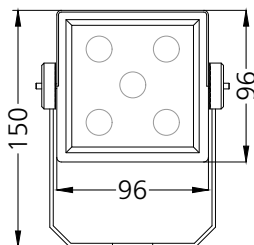
867lm



3000K



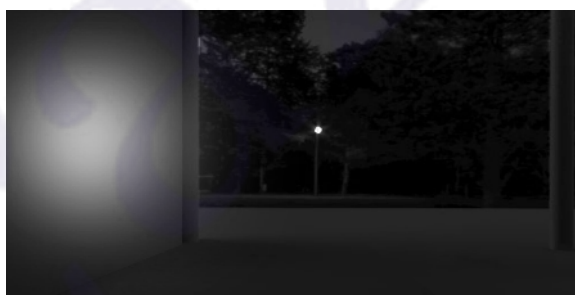
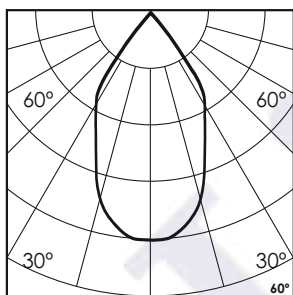
60°



## Photometric Data

Light source	LED - High Power
Power (W)	9W
Delivered lumens	867lm
Source lumens	1008lm
Colour temperature (K)	3000K
Luminaire efficacy	96.37lm/W
Beam angle	60°
Cutoff angle	NA

Light output ratio	86%
Color rendering index (Ra)	>92
Color rendering index (R9)	>50
Binning MacAdam	<3 SDCM
LED life	L90 B10 Tj75°C
UGR	<19
Operating temperature	-20°C to +50°C
Light distribution	Direct - Symmetric



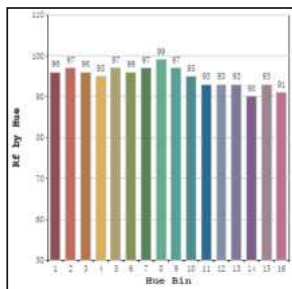
## Technical Data

Mounting detail	Surface Uplighter
Fixing detail	Cowl / Spike / Mounting Bracket
Orientation	Adjustable
IP rating	IP65
IK rating	IK05
Glow wire test	850°

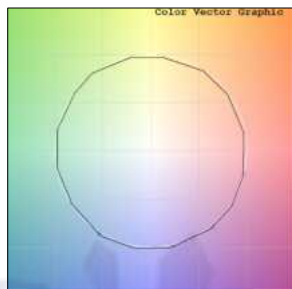
Heatsink material	Diecast alm.
Product weight	928gms
Safety class	III
Insulation class	III
Voltage	AC230V / DC24V
Driver	In-built - AC230V Remote - DC24V

## Photometric Graphs

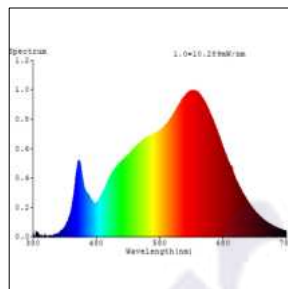
Hue Bin vs Rf Graph



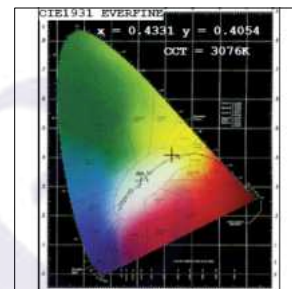
Color Vector Graph



Spectrum vs Wavelength Graph



CIE Chromaticity Graph



## Finish Options

### Body Finish

- ☐ Matt Grey
- ☐ Matt Black
- ☒ Custom RAL Color

## Filter Options



Honeycomb Filter

Above filters can be added to the fixture and need to be ordered as a separate accessory

## Accessories Options



Cowl



Spike

Above accessories can be added to the fixture and need to be ordered as a separate accessory

## Dimming Options



Constant Voltage Driver  
75w DC24V  
Non Dimmable



Constant Voltage Driver  
75w DC24V  
Triac Dimmable



Constant Voltage Driver  
75w DC24V  
Analog 0-10V / 1-10V Dimmable



Constant Voltage Driver  
75w DC24V  
Dali Dimmable

L'azure constantly strives to improve our products using the latest technological advancements in the industry.  
Due to which the data mentioned in the data sheet is subject to change without prior notice.