

Opus Diffused M TL - #1144



15W



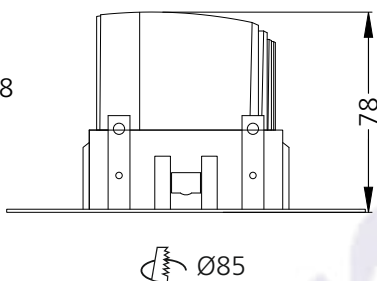
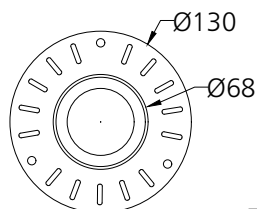
1240lm



4000K



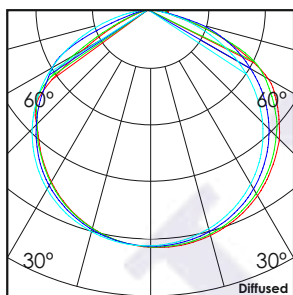
Diffused



Photometric Data

Light source	LED - Mid Power
Power (W)	15W
Delivered lumens	1240lm
Source lumens	1980lm
Colour temperature (K)	4000K
Luminaire efficacy	82.66lm/W
Beam angle	Diffused
Cutoff angle	NA

Light output ratio	62%
Color rendering index (Ra)	>92
Color rendering index (R9)	>50
Binning MacAdam	<3 SDCM
LED life	L90 B10 Tj75°C
UGR	<19
Operating temperature	-20°C to +50°C
Light distribution	Direct - Diffused



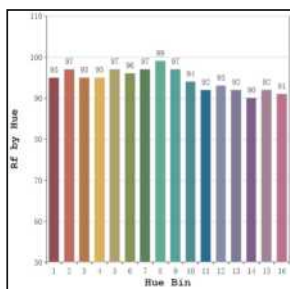
Technical Data

Mounting detail	Ceiling - Recessed 1-25mm
Fixing detail	Dual tension spring
Orientation	Fixed
IP rating	IP44
Glow wire test	850°
Trim material	NA
Heatsink material	Diecast alm.

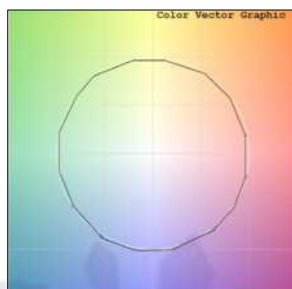
Product weight	377gms
Safety class	III
Insulation class	III
LED current (mA)	350mA
Voltage	AC230V
Forward voltage	DC36V
Driver	CC - Remote

Photometric Graphs

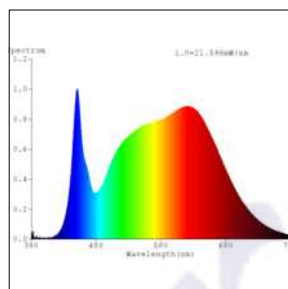
Hue Bin vs Rf Graph



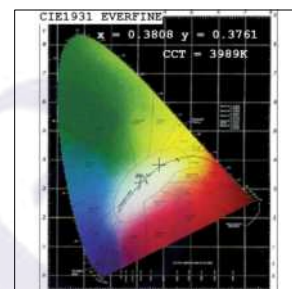
Color Vector Graph



Spectrum vs Wavelength Graph



CIE Chromaticity Graph



Finish Options

Trim Finish

- ☐ Matt White
- ☒ Matt Black
- ☐ Custom RAL Color

Reflector Finish

- ☐ Matt White
- ☒ Matt Black
- ☐ Specular
- ☐ Pearl Black
- ☐ Black Chrome
- ☐ Matt Silver
- ☐ Matt Gold

Dimming Options



Constant Current Driver
15w 350mA 220-240V
Non Dimmable



Constant Current Driver
15w 350mA 220-240V
Triac Dimmable



Constant Current Driver
15w 350mA 220-240V
Analog 0-10V / 1-10V Dimmable



Constant Current Driver
15w 350mA 220-240V
Dali Dimmable