

# Opus Diffused XL T - #1149



35W



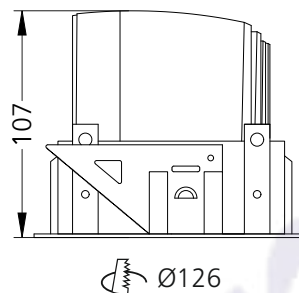
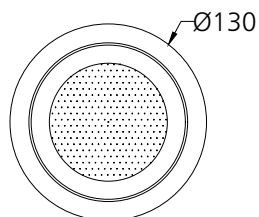
2815lm



3000K

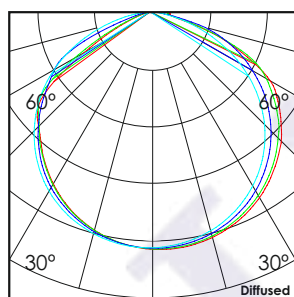


Diffused



## Photometric Data

Light source	LED - Mid Power	Light output ratio	64%
Power (W)	35W	Color rendering index (Ra)	>92
Delivered lumens	2815lm	Color rendering index (R9)	>50
Source lumens	4375lm	Binning MacAdam	<3 SDCM
Colour temperature (K)	3000K	LED life	L90 B10 Tj75°C
Luminaire efficacy	80.42lm/W	UGR	<19
Beam angle	Diffused	Operating temperature	-20°C to +50°C
Cutoff angle	NA	Light distribution	Direct - Diffused

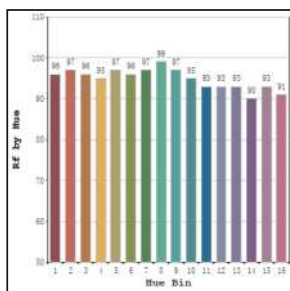


## Technical Data

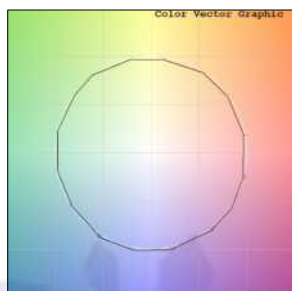
Mounting detail	Ceiling - Recessed 1-25mm	Product weight	1000gms
Fixing detail	Dual tension spring	Safety class	III
Orientation	Fixed	Insulation class	III
IP rating	IP44	LED current (mA)	900mA
Glow wire test	850°	Voltage	AC230V
Trim material	Diecast alm.	Forward voltage	DC36V
Heatsink material	Diecast alm.	Driver	CC - Remote

## Photometric Graphs

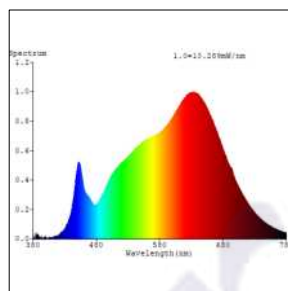
Hue Bin vs Rf Graph



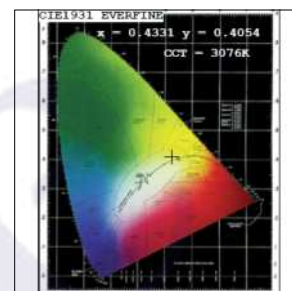
Color Vector Graph



Spectrum vs Wavelength Graph



CIE Chromaticity Graph



## Finish Options

### Trim Finish

- ☐ Matt White
- ☒ Matt Black
- ☐ Custom RAL Color

### Reflector Finish

- ☐ Matt White
- ☒ Matt Black
- ☐ Specular
- ☐ Pearl Black
- ☐ Black Chrome
- ☐ Matt Silver
- ☐ Matt Gold

## Dimming Options



Constant Current Driver  
35w 900mA 220-240V  
Non Dimmable



Constant Current Driver  
35w 900mA 220-240V  
Triac Dimmable



Constant Current Driver  
35w 900mA 220-240V  
Analog 0-10V / 1-10V Dimmable



Constant Current Driver  
35w 900mA 220-240V  
Dali Dimmable