

# Peculo Bollard Effect - #3143



8W



755lm



3000K



Diffused



## Photometric Data

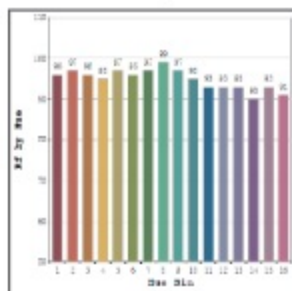
Light source	LED - Array	Light output ratio	72%
Power (W)	8W	Color rendering index (Ra)	>82
Delivered lumens	755lm	Binning MacAdam	<3 SDCM
Source lumens	1040lm	LED life	L90 B10 Tj75°C
Colour temperature (K)	3000K	UGR	<19
Luminaire efficacy	94.37lm/W	Operating temperature	-20°C to + 50°C
Height	300mm / 600mm	Light distribution	Direct - Diffused

## Technical Data

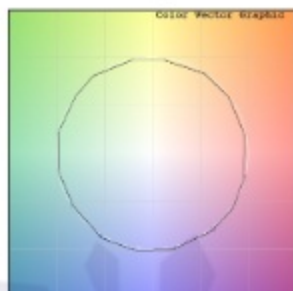
Mounting detail	Floor - Surface	Body material	Aluminium
Fixing detail	Anchor Fastner	Heatsink material	Diecast alm.
Orientation	Fixed	Safety class	III
IP rating	IP65	Insulation class	III
IK rating	IK06	Voltage	AC230V
Glow wire test	850°	Driver	In-built

## Photometric Graphs

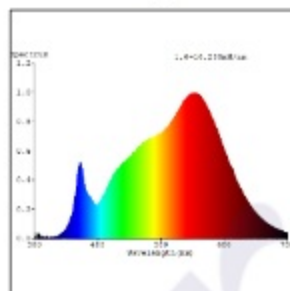
Hue Bin vs Rf Graph



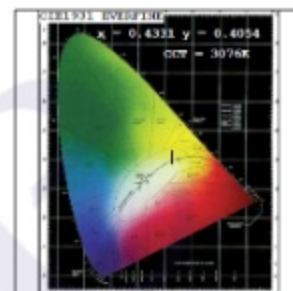
Color Vector Graph



Spectrum vs Wavelength Graph



CIE Chromaticity Graph



## Finish Options

### Body Finish

- Matt Black
- Matt Grey
- Custom RAL Color

## Dimming Options



Constant Current Driver  
8w 220-240V  
Non Dimmable



Constant Current Driver  
8w 220-240V  
Triac Dimmable



Constant Current Driver  
8w 220-240V  
Analog 0-10V / 1-10V Dimmable



Constant Current Driver  
8w 220-240V  
Dali Dimmable

L'azure constantly strives to improve our products using the latest technological advancements in the industry.  
Due to which the data mentioned in the data sheet is subject to change without prior notice.