

Peculo Pole Parsol - #3115



30W



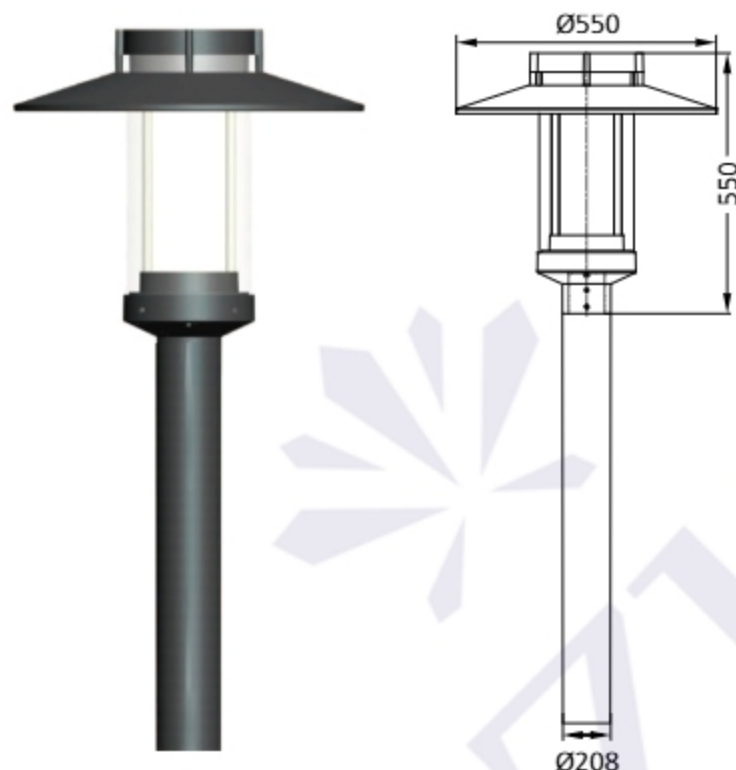
3540lm



3000K



Diffused



Photometric Data

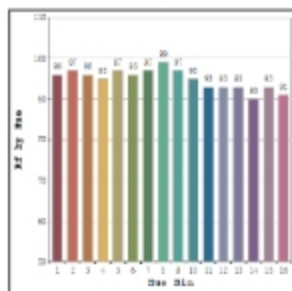
Light source	LED - High Power	Light output ratio	84%
Power (W)	30W	Color rendering index (Ra)	>82
Delivered lumens	3540lm	Binning MacAdam	<3 SDCM
Source lumens	4170lm	LED life	L90 B10 Tj75°C
Colour temperature (K)	3000K	UGR	<19
Luminaire efficacy	118lm/W	Operating temperature	-20°C to + 50°C
Height	3.0m / 4.0m / 6.0m	Light distribution	Direct - Diffused

Technical Data

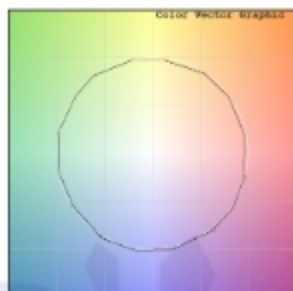
Mounting detail	Floor - Surface	Body material	Galvanized Steel
Fixing detail	Foundation Bolt	Heatsink material	Diecast alm.
Orientation	Fixed	Safety class	III
IP rating	IP65	Insulation class	III
IK rating	IK06	Voltage	AC230V
Glow wire test	850°	Driver	In-built

Photometric Graphs

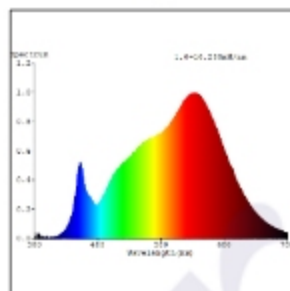
Hue Bin vs Rf Graph



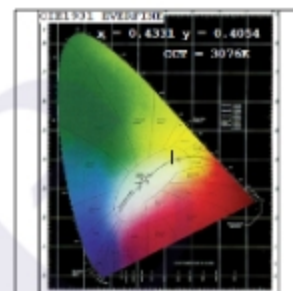
Color Vector Graph



Spectrum vs Wavelength Graph



CIE Chromaticity Graph



Finish Options

Body Finish

- Matt Black
- Matt Grey
- Custom RAL Color

Dimming Options



Constant Current Driver
30w 220-240V
Non Dimmable



Constant Current Driver
30w 220-240V
Triac Dimmable



Constant Current Driver
30w 220-240V
Analog 0-10V / 1-10V Dimmable



Constant Current Driver
30w 220-240V
Dali Dimmable

L'azure constantly strives to improve our products using the latest technological advancements in the industry.
Due to which the data mentioned in the data sheet is subject to change without prior notice.