

Shuays R1 - #3051



3W



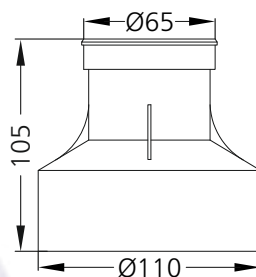
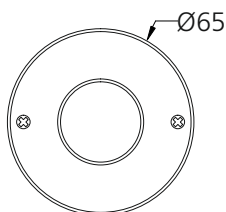
281lm



3000K



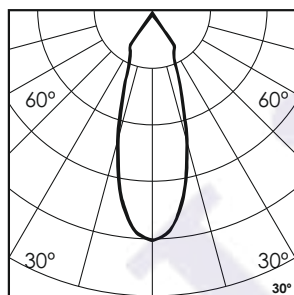
30°



Note :
This Luminaire can not be operated
out of water for over 15 minutes.

Photometric Data

Light source	LED - High Power	Light output ratio	83%
Power (W)	3W	Color rendering index (Ra)	>92
Delivered lumens	281lm	Color rendering index (R9)	>50
Source lumens	336lm	Binning MacAdam	<3 SDCM
Colour temperature (K)	3000K	LED life	L90 B10 Tj75°C
Luminaire efficacy	93.7lm/W	UGR	<19
Beam angle	30°	Operating temperature	-20°C to +50°C
Cutoff angle	NA	Light distribution	Direct - Symmetric

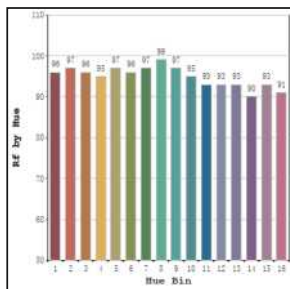


Technical Data

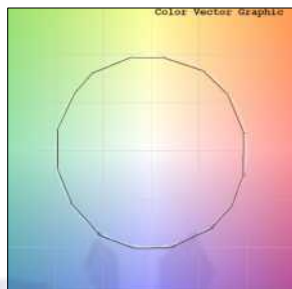
Mounting detail	Underwater Light	Glow wire test	850°
Fixing detail	Backbox	Product weight	413gms
Orientation	Fixed	Safety class	III
IP rating	IP68	Insulation class	III
IK rating	IK08	Voltage	DC24V
Heatsink material	SS	Driver	Remote - DC24V
Ring material	SS		

Photometric Graphs

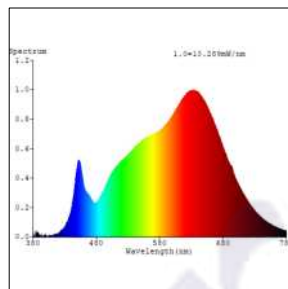
Hue Bin vs Rf Graph



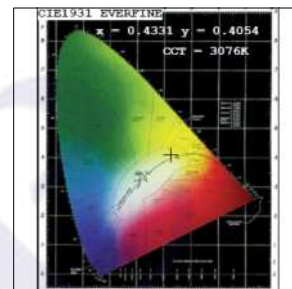
Color Vector Graph



Spectrum vs Wavelength Graph



CIE Chromaticity Graph



Finish Options

Trim Finish

- ☐ SS
- ☒ Custom RAL Color

Dimming Options



Constant Voltage Driver
75w DC24V
Non Dimmable



Constant Voltage Driver
75w DC24V
Triac Dimmable



Constant Voltage Driver
75w DC24V
Analog 0-10V / 1-10V Dimmable



Constant Voltage Driver
75w DC24V
Dali Dimmable