

Shuays R12 - #3055



24W



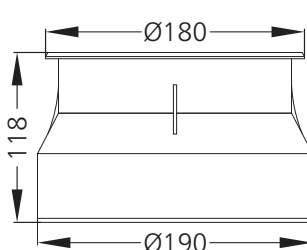
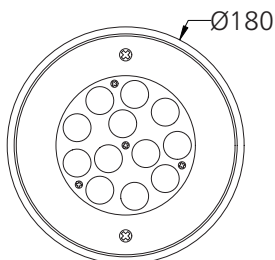
2205lm



3000K



Asymmetric

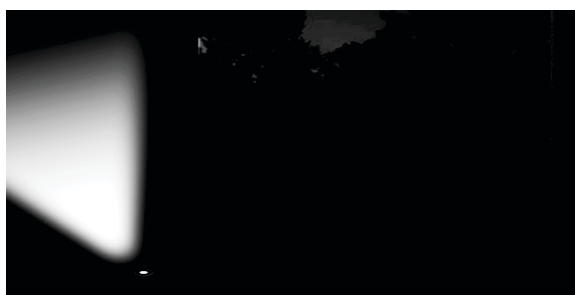
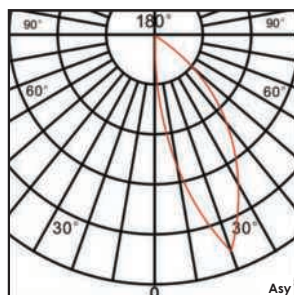


Note :
This Luminaire can not be operated
out of water for over 15 minutes.

Photometric Data

Light source	LED - High Power
Power (W)	24W
Delivered lumens	2205lm
Source lumens	2688lm
Colour temperature (K)	3000K
Luminaire efficacy	91.89lm/W
Beam angle	Asymmetric
Cutoff angle	NA

Light output ratio	82%
Color rendering index (Ra)	>95
Color rendering index (R9)	>85
Binning MacAdam	<2 SDCM
LED life	L90 B10 Tj75°C
UGR	<19
Operating temperature	-20°C to +50°C
Light distribution	Asymmetric



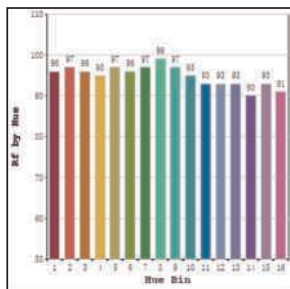
Technical Data

Mounting detail	Underwater Light
Fixing detail	Backbox
Orientation	Fixed
IP rating	IP68
IK rating	IK08
Heatsink material	SS
Ring material	SS

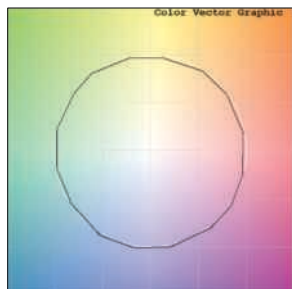
Glow wire test	850°
Product weight	1929gms
Safety class	III
Insulation class	III
Voltage	DC24V
Driver	Remote - DC24V

Photometric Graphs

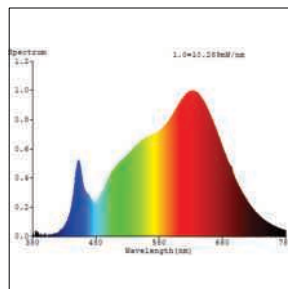
Hue Bin vs Rf Graph



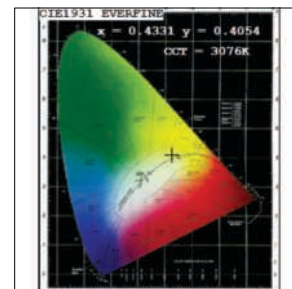
Color Vector Graph



Spectrum vs Wavelength Graph



CIE Chromaticity Graph



Finish Options

Trim Finish

- ☐ SS
- ☒ Custom RAL Color

Dimming Options



Constant Voltage Driver
75w DC24V
Non Dimmable



Constant Voltage Driver
75w DC24V
Triac Dimmable



Constant Voltage Driver
75w DC24V
Analog 0-10V / 1-10V Dimmable



Constant Voltage Driver
75w DC24V
Dali Dimmable