

Mesh - #2048



820W/M²



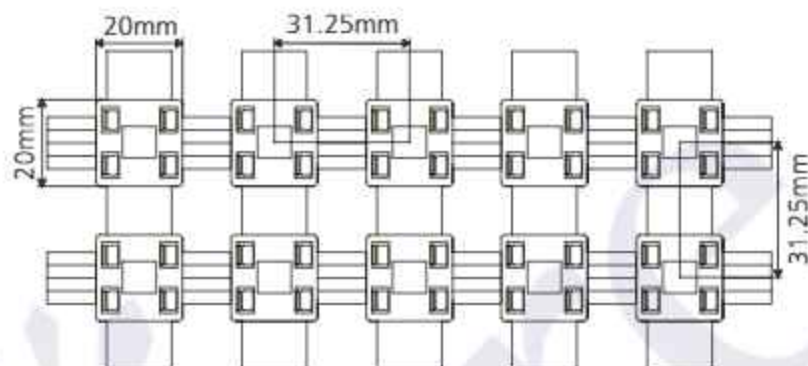
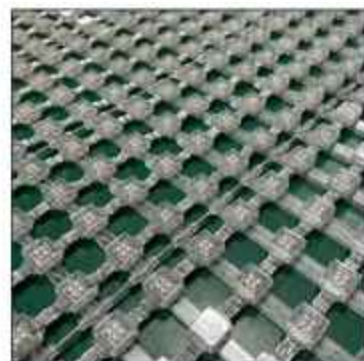
36160lm/m² + 59040lm/m²



RGB+W (2700K)

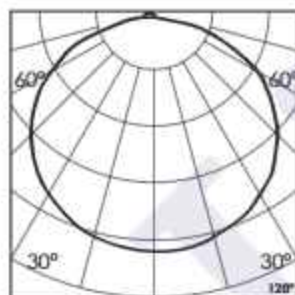


120°



Photometric Data

| | | | |
|------------------------|---|----------------------------|--------------------|
| Light source | LED - Low Power | Beam angle | 120° |
| Power (W) | 820W/M ² | Light output ratio | 64% |
| Delivered lumens | 36160lm/m ² + 59040lm/m ² | Color rendering index (Ra) | > 92 |
| Source lumens | 65600lm/m ² + 91020lm/m ² | Color rendering index (R9) | > 50 |
| Colour temperature (K) | RGB + W (2700K) | Binning MacAdam | < 3 SDCM |
| Luminaire efficacy | 44.09lm/W + 72lm/W | LED life | L90 B10 Tj75°C |
| Pitch | 31.25MM | Operating temperature | -20°C to + 50°C |
| No. of LED | 1024LED/M ² | Light distribution | Direct - Symmetric |

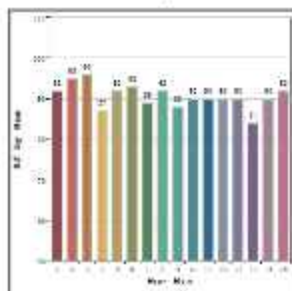


Technical Data

| | | | |
|-----------------|-----------------|----------------------|-------------|
| Mounting detail | Profile Mounted | Safety class | III |
| Fixing detail | In-built Clip | Insulation class | III |
| Orientation | Fixed | Driver Input Voltage | AC230V |
| IP rating | IP66 | Strip Light voltage | DC12V |
| Glow wire test | 850° | Driver | CV - Remote |

Photometric Graphs

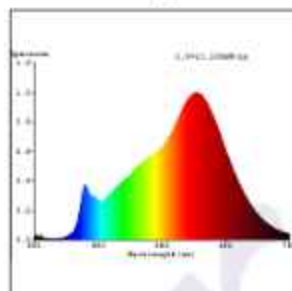
Hue Bin vs Rf Graph



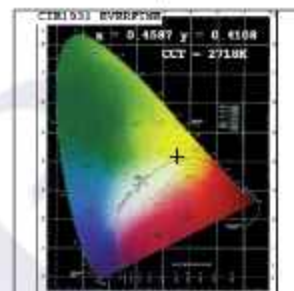
Color Vector Graph



Spectrum vs Wavelength Graph



CIE Chromaticity Graph



Dimming Options



Constant Voltage Driver
DC12V

L'azure constantly strives to improve our products using the latest technological advancements in the industry.
Due to which the data mentioned in the data sheet is subject to change without prior notice.